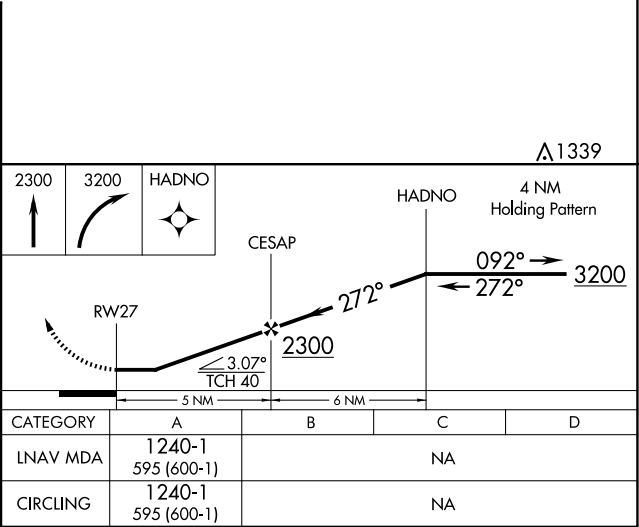
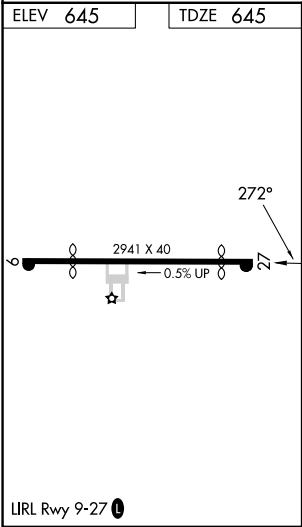
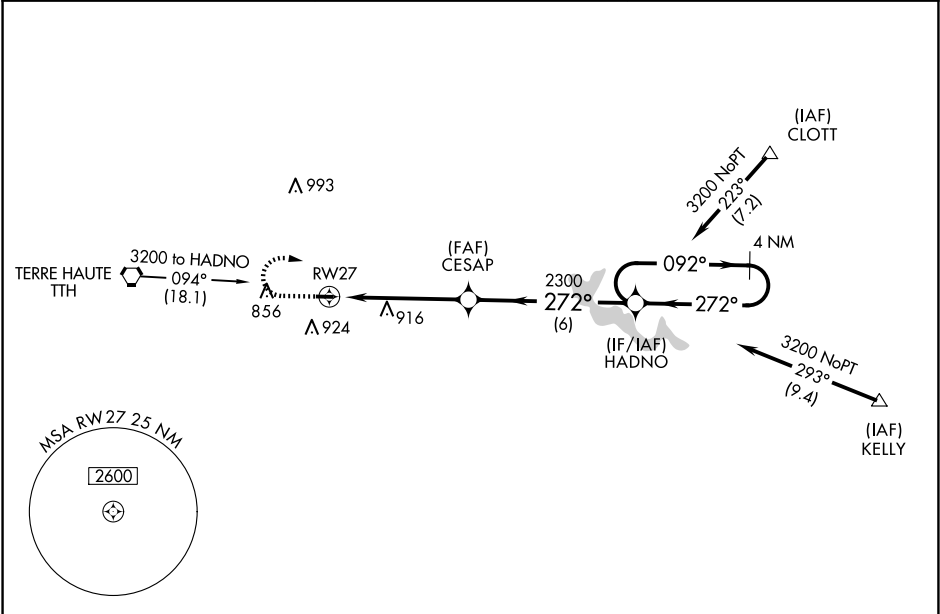


APP CRS <b>272°</b>	Rwy Idg TDZE Apt Elev	<b>2499</b> <b>645</b> <b>645</b>
------------------------	-----------------------------	---

RNAV (GPS) RWY 27

BRAZIL CLAY COUNTY (ØI2)

RNP APCH - GPS.		MISSED APPROACH: Climb to 2300 then dimbing right turn to 3200 direct HADNO and hold.
▼ NA	Use HUF altimeter setting. Procedure NA at night. Helicopter visibility reduction below 1 SM NA.	
HUF ASOS <b>127.5</b>	HULMAN APP CON <b>125.45 339.8</b>	UNICOM <b>122.8 (CTAF) Ø</b>



EC-2, 10 JUL 2025 to 07 AUG 2025

EC-2, 10 JUL 2025 to 07 AUG 2025