

WAAS CH 63125 W21A	APP CRS 207°	Rwy Idg TDZE 35 Apt Elev 36	5500
--	------------------------	---	-------------

RNAV (GPS) RWY 21

PLYMOUTH MUNI (PMZ)

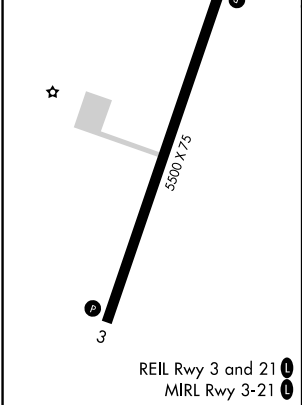
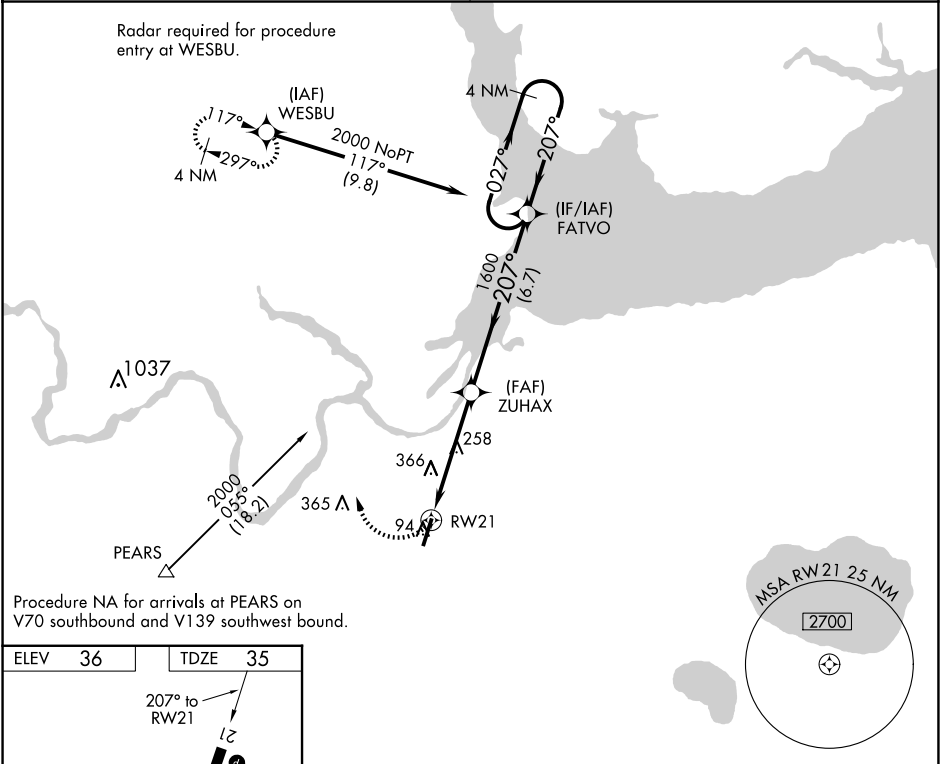
▼

NA

Use Northeastern Rgnl altimeter setting; when not received, use Coastal Carolina Rgnl altimeter setting and increase all MDA 80 feet; increase all Cat C visibilities ¼ SM. When VGSI inop, procedure NA at night. DME/DME RNP-0.3 NA.

MISSED APPROACH: Climbing right turn to 2000 direct WESBU and hold.

CHERRY POINT APP CON 119.35 377.175	UNICOM 122.8 (CTAF) 0
---	---------------------------------



2000	WESBU	VGSI and descent angles not coincident (VGSI Angle 4.00/TCH 28).			4 NM
		FATVO			Holding Pattern
		ZUHAX			
		RW21	027°→ 2000		
		207°←			
		3.00°			
		TCH 40			
		1600			
		4.8 NM			6.7 NM
CATEGORY	A		B	C	D
LP MDA	600-1		565 (600-1)	600-1½ 565 (600-1½)	NA
LNAV MDA	660-1		625 (700-1)	660-1¾ 625 (700-1¾)	NA
CIRCLING	660-1 624 (700-1)		720-1 684 (700-1)	720-2 684 (700-2)	NA