

WAAS CH 72612 W35A	APP CRS 350°	Rwy Idg 4400 TDZE 769 Apt Elev 769
--	------------------------	---

RNAV (GPS) RWY 35

HANNIBAL RGNL (HAE)

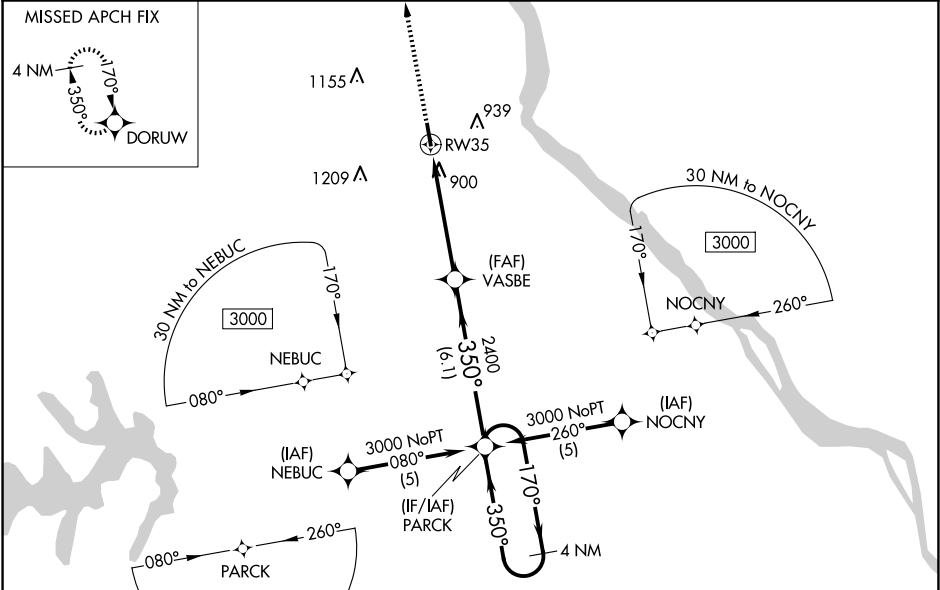
▼

▲ NA

For uncompensated Baro-VNAV systems, LNAV/VNAV NA below -16°C (4°F) or above 54°C (130°F).
DME/DME RNP-0.3 NA. Visibility reduction by helicopters NA.
When local altimeter setting not received, use Quincy altimeter setting; increase all DA 41 feet, all MDA 60 feet, and Circling Cat C visibility ¼ SM.
Baro-VNAV and VDP NA when using Quincy, IL altimeter setting.

MISSED APPROACH: Climb to 3000 direct DORUW and hold.

AWOS-3PT 120.775	KANSAS CITY CENTER 126.225 317.775	UNICOM 122.8 (CTAF) 1
----------------------------	--	---------------------------------



ELEV 769

TDZE 769

3000

DORUW

*LNAV only

*1.2 NM to RW35

RW35

1.2 NM

3.7 NM

6.1 NM

VASBE

PARCK

4 NM Holding Pattern

170°

350°

3000

GP 3.00°

TCH 40

2400

350°

CATEGORY	A	B	C	D
LPV DA	1019-1	250 (300-1)		NA
LNAV/VNAV DA	1242-1¾	473 (500-1¾)		NA
LNAV MDA	1200-1	431 (500-1)	1200-1¼ 431 (500-1¼)	NA
CIRCLING	1260-1	491 (500-1)	1640-2½ 871 (900-2½)	NA

L1

4400 X 100

35

350°

MIRL Rwy 17-35 1

REIL Rws 17 and 35 1