

WAAS CH 62812 W17A	APP CRS 170°	Rwy Idg 4400 TDZE 769 Apt Elev 769
--	------------------------	---

RNAV (GPS) RWY 17

HANNIBAL RGNL (HAE)

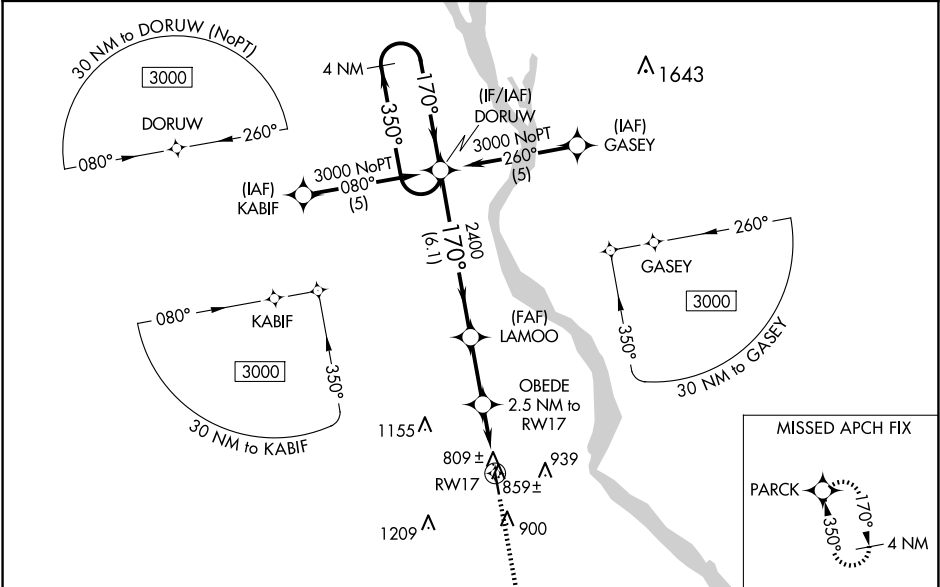
▼

▲ NA

For uncompensated Baro-VNAV systems, LNAV/VNAV NA below -16°C (4°F) or above 54°C (130°F). DME/DME RNP-0.3 NA. Visibility reduction by helicopters NA. When local altimeter setting not received, use Quincy altimeter setting; increase all DA 41 feet, all MDA 60 feet, increase LNAV Cat C visibility ¼ SM and Circling Cat C visibility ¼ SM. Baro-VNAV and VDP NA when using Quincy altimeter setting.

MISSED APPROACH: Climb to 3000 direct PARCK and hold.

AWOS-3PT 120.775	KANSAS CITY CENTER 126.225 317.775	UNICOM 122.8(CTAF) 0
----------------------------	--	--------------------------------



4 NM Holding Pattern		DORUW	LAMOO	OBEDE 2.5 NM to RW17	PARCK
3000		← 350°	170° →	170°	↑ 3000
GP 3.00°		TCH 40			
		6.1 NM	2.5 NM	1.5 NM	1 NM
CATEGORY	A	B	C	D	
LPV DA	1019-1 250 (300-1)			NA	
LNAV/VNAV DA	1079-1¼ 310 (400-1¼)			NA	
LNAV MDA	1120-1 351 (400-1)			NA	
CIRCLING	1260-1 491 (500-1)		1640-2½ 871 (900-2½)		NA

ELEV 769

TDZE 769

170°

4

400 X 100

35

MIRL Rwy 17-35 0

REIL Rwy 17 and 35 0