

WAAS CH 93707 W13A	APP CRS 130°	Rwy Idg TDZE 2503 Apt Elev 2503
----------------------------------------	------------------------	-----------------------------------------------------

RNAV (GPS) RWY 13

COZAD MUNI (CZD)

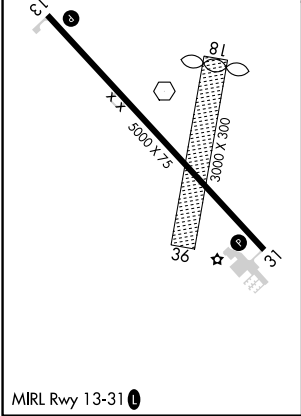
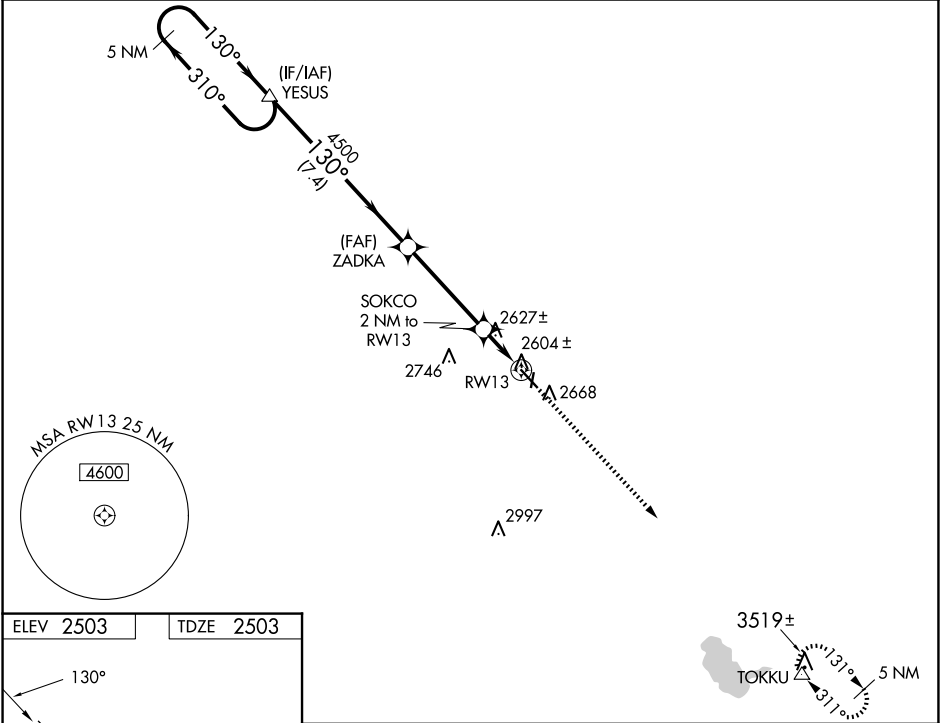
⚠

NA

Circling NA to Rwy 18 and 36. Baro-VNAV NA. DME/DME RNP-0.3 NA.
Use Lexington altimeter setting; when not received, use North Platte altimeter setting and increase all DAs 79 feet and LPV and LNAV/VNAV visibility ¼ mile all Cats, increase all MDAs 80 feet and Circling Cat C visibility ¼ mile. Helicopter visibility reduction below ¾ SM NA.

MISSED APPROACH: Climb to 5500 direct TOKKU and hold.

LXN AWOS-3 121.025	DENVER CENTER 132.7 226.675	UNICOM 122.8 (CTAF) 0
------------------------------	---------------------------------------	---------------------------------



<div>5 NM Holding Pattern</div> <div>YESUS</div> <div>5000 ← 310° → 130° → 4500</div> <div>GP 3.00° TCH 52</div>				<div>3519±</div> <div>TOKKU</div> <div>5 NM</div> <div>* LNAV only.</div>	
<div>7.4 NM</div> <div>4 NM</div> <div>2 NM</div>				<div>RW13</div>	
CATEGORY	A		B		D
LPV DA	2875-1¼		372 (400-1¼)		NA
LNAV/VNAV DA	2913-1½		410 (500-1½)		NA
LNAV MDA	2920-1		417 (500-1)		NA
CIRCLING	3080-1		577 (600-1)		NA

NC-2, 10 JUL 2025 to 07 AUG 2025

NC-2, 10 JUL 2025 to 07 AUG 2025