

WAAS CH <b>40238</b> <b>W27A</b>	APP CRS <b>273°</b>	Rwy Idg TDZE Apt Elev	<b>3641</b> <b>708</b> <b>708</b>
--	------------------------	-----------------------------	---

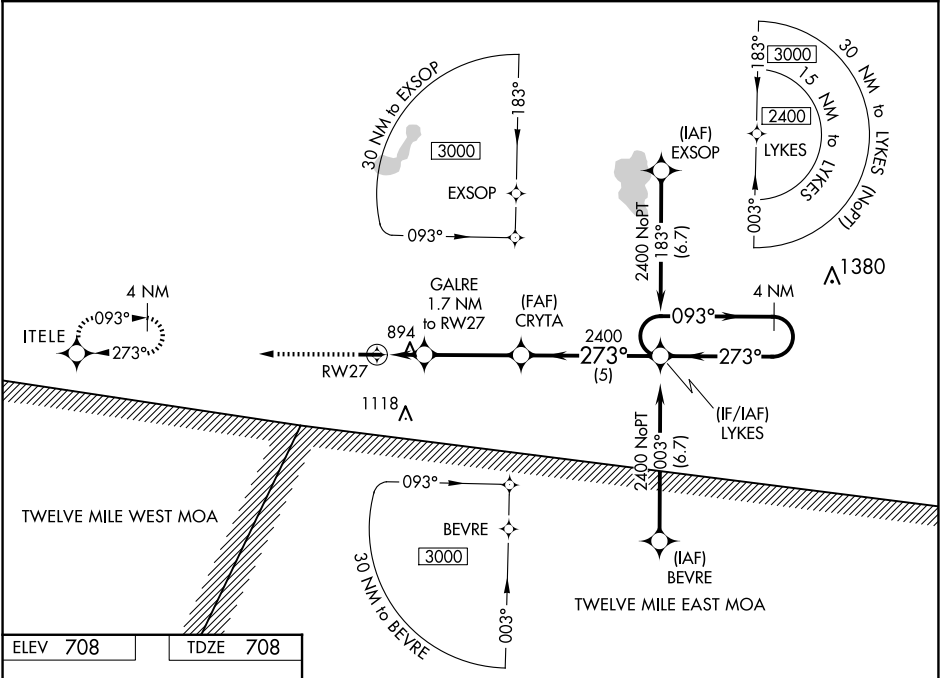
RNAV (GPS) RWY 27  
ARENS FLD (RWN)

**NA**

Baro-VNAV NA. Use Knox altimeter setting; when not received, use Rochester altimeter setting and increase all DA/MDA 20 feet and LNAV/VNAV all Cts visibility 1/8 mile. DME/DME RNP-0.3 NA. Helicopter visibility reduction below 3/4 SM NA.

MISSED APPROACH: Climb to 2400 direct ITELE and hold.

OXI AWOS-3 <b>135.775</b>	SOUTH BEND APP CON ★ <b>132.05 257.8</b>	UNICOM <b>122.8 (CTAF) 0</b>
------------------------------	---	---------------------------------



ELEV **708** TDZE **708**

MIRL Rwy 9-27 **0**  
REIL Rws 9 and 27 **0**

4201 X 75

273°

2400 ITELE VGSI and RNAV glidepath not coincident (VGSI Angle 3.50/TCH 23).			
*LNAV only.			
RW27 GALRE 1.7 NM to RW27 CRYTA LYKES 4 NM Holding Pattern			
*1280 2400 273° 093° 2400 GP 3.00° TCH 45			
1.7 NM 3.5 NM 5 NM			
CATEGORY	A	B	C
LPV DA	995-1	287 (300-1)	NA
LNAV/VNAV DA	1224-1 3/4	516 (600-1 3/4)	NA
LNAV MDA	1200-1	492 (500-1)	1200-1 3/8 492 (500-1 3/8)
CIRCLING	1240-1	532 (600-1)	1480-2 1/4 772 (800-2 1/4)

EC-2, 10 JUL 2025 to 07 AUG 2025

EC-2, 10 JUL 2025 to 07 AUG 2025