

WAAS CH 66035 W13A	APP CRS 129°	Rwy Idg 4003 TDZE 564 Apt Elev 585
--	------------------------	---

RNAV (GPS) RWY 13

MARSHALL COUNTY (C75)

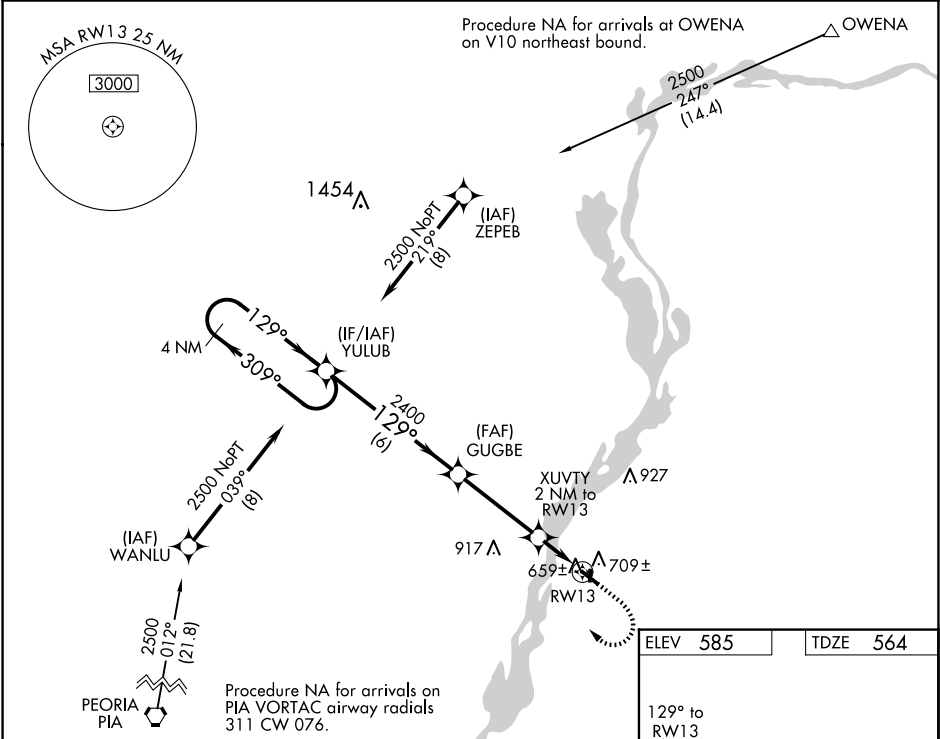
⚠

⚠

DME/DME RNP-0.3 NA. Helicopter visibility reduction below ¾ SM NA. When local altimeter setting not received, use Peru altimeter setting and increase all MDA 80 feet and increase LP and Circling Cat C visibilities ¼ mile and LNAV Cat C visibility ½ mile. Night landing: Rwy 18, 31, 36 NA.

MISSED APPROACH: Climb to 1000 then climbing right turn to 2500 direct YULUB and hold.

AWOS-3 119.425	CHICAGO CENTER 124.55 307.125	UNICOM 122.8 (CTAF) 0
--------------------------	---	---------------------------------



4 NM Holding Pattern YULUB		Visual Segment - Obstacles.		1000	2500	YULUB
2500 ← 309°		129° →		GUGBE		
		129° →		XUVTY 2 NM to RW13		
		2400		RW13		
		1220				
		6 NM		3.7 NM		
				2 NM		
CATEGORY	A	B	C	D		
LP MDA	920-1	356 (400-1)	920-1½ 356 (400-1½)	NA		
LNAV MDA	960-1	396 (400-1)	960-1¼ 396 (400-1¼)	NA		
CIRCLING	1100-1	515 (600-1)	1200-1¾ 615 (700-1¾)	NA		

ELEV 585

TDZE 564

129° to RW13

81

1.3° UP

50

2.99 X 661

21

4003 X 75

0.6° UP

36

31

REIL Rwy 13 0

MIRL Rwy 13-31 0

LIRL Rwy 18-36