

HAILEY, IDAHO

AL-6239 (FAA)

25163

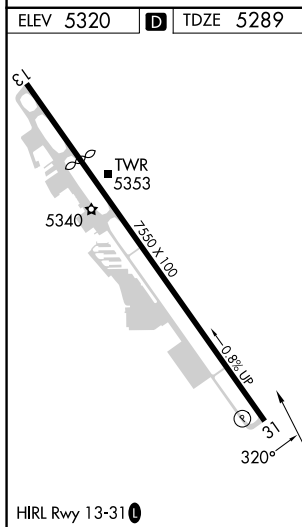
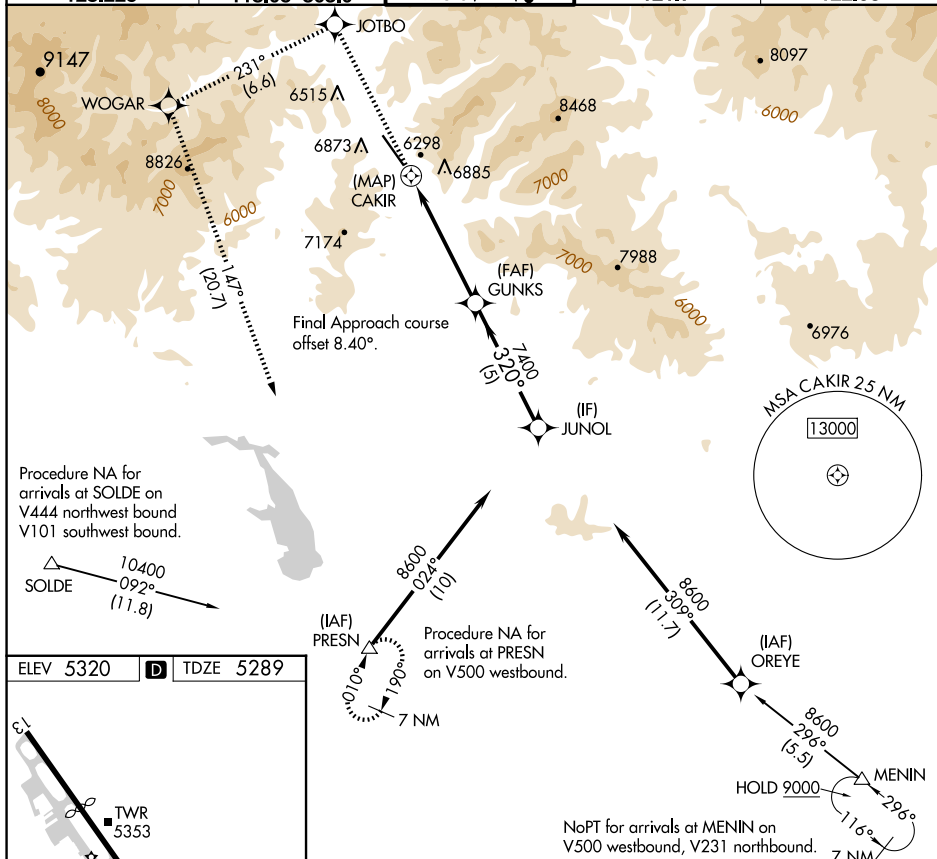
WAAS CH 77639 W31A	APP CRS 320°	Rwy Ldg TDZE Apt Elev	6631 5289 5320
--	------------------------	-----------------------------	---

RNAV (GPS) X RWY 31
FRIEDMAN MEML (SUN)

T DME/DME RNP-0.3 NA. Rwy 31
A helicopter visibility reduction below
☃ -13°C 1 SM NA.

MISSED APPROACH: (Do not exceed 185 KIAS until WOGAR) Climb to 10500 direct JOTBO and on track 231° to WOGAR and on track 147° to PRESN and hold. *Missed approach requires minimum climb of 420 feet per NM to 9500; if unable to meet climb gradient, see RNAV (GPS) Y RWY 31.

ATIS 128.225	SALT LAKE CENTER 118.05 363.0	HAILEY TOWER ★ 125.6 (CTAF) 0	GND CON 121.7	UNICOM 122.95
-----------------	----------------------------------	----------------------------------	------------------	------------------



10500 ↑	JOTBO ☼	tr 231° ☼	WOGAR ☼	tr 147° △	PRESN	7400 JUNOL	
						8600	
CATEGORY		A	B		C		D
LP MDA*	6180-1¼		891 (900-1¼)		6180-2½		891 (900-2½)
LNAV MDA*	6180-1¼ 1631 (1600-1¼)		6920-1½ 1631 (1600-1½)		6920-3		1631 (1600-3)

HAILEY, IDAHO
Orig 21JUL16

43°30'N-114°18'W

FRIEDMAN MEML (SUN)
RNAV (GPS) X RWY 31

NW-1, 10 JUL 2025 to 07 AUG 2025

NW-1, 10 JUL 2025 to 07 AUG 2025