

Rwy Idg	<b>3302</b>
TDZE	<b>648</b>
Apt Elev	<b>648</b>

# RNAV (GPS) RWY 4

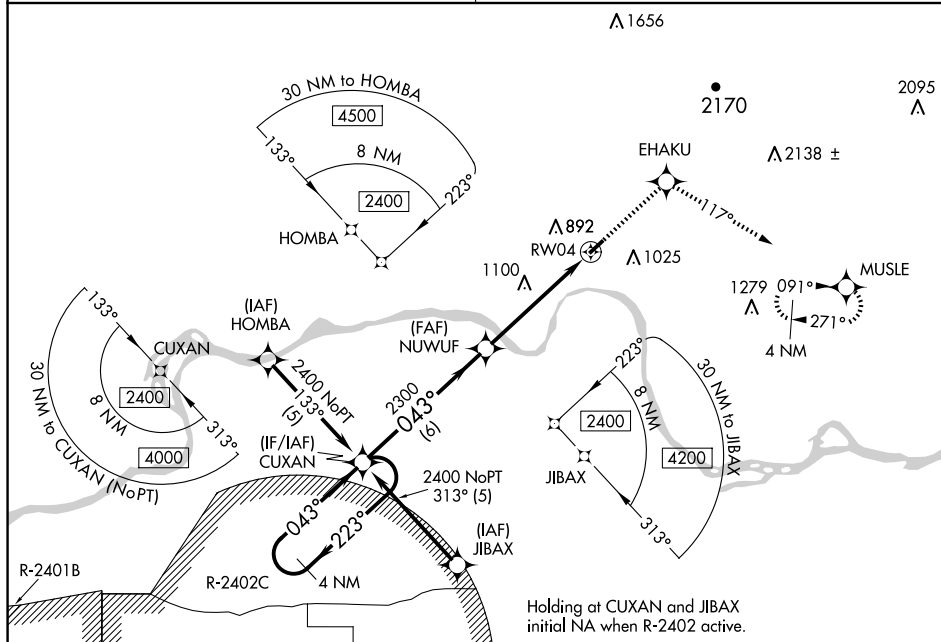
## OZARK/FRANKLIN COUNTY (7M5)

**T** DME/DME RNP-0.3 NA. Visibility reduction by helicopters NA. Use Fort Smith altimeter setting; when not received, use Drake Fld altimeter setting and increase all MDAs 80 feet; increase LNAV Cat A/C and Circling Cat C visibility  $\frac{1}{4}$  SM.

**MISSED APPROACH:** Climb to 3200 direct EHAKU and on track 117° to MUSLE and hold.

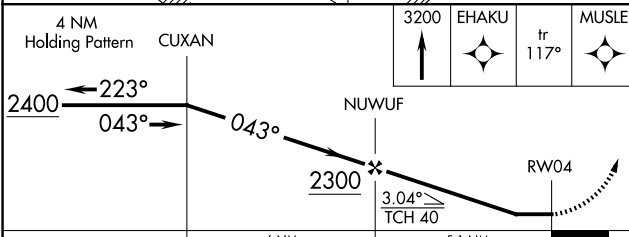
RAZORBACK APP CON ★  
120.9 343.75

UNICOM  
122.8 (CTAF) **L**



Holding at CUXAN and JIBAX  
initial NA when R-2402 active

TDZE 648



CATEGORY	6 NM		5.1 NM	
	A	B	C	D
INAV MDA	1480-1 832 (900-1)	1480-1¼ 832 (900-1¼)	1480-2½ 832 (900-2½)	NA
CIRCLING	1480-1¼ 832 (900-1¼)		1500-2½ 852 (900-2½)	NA

Diagram illustrating the beam profile and rotation. The beam is labeled 3002 X 75. The camber is indicated as 1.3% UP. The rotation is indicated as 0.43° to RW04.

MIRL Rwy 4-22 **L**