

APP CRS  
229°

Rwy Idg  
TDZE  
Apt Elev

3558  
896  
896

RNAV (GPS) RWY 23

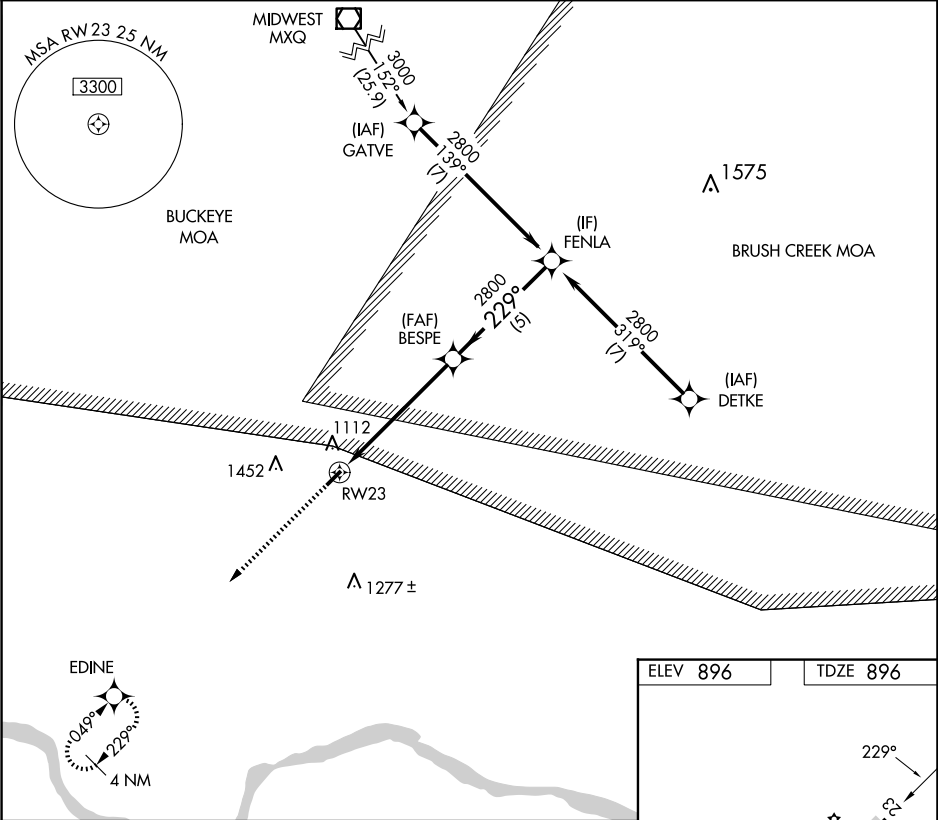
ALEXANDER SALAMON (AMT)

RNP APCH - GPS.

Procedure NA at night. Rwy 23 helicopter visibility reduction below 1 SM NA.  
NA Use Flemingsburg, Kentucky altimeter setting.

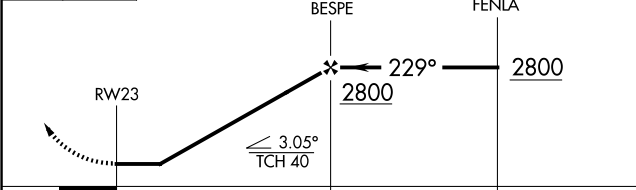
MISSED APPROACH: Climb to 2800 direct EDINE and hold.

FGX AWOS-3 118.125	INDIANAPOLIS CENTER 135.575 290.5	UNICOM 122.8 (CTAF) 1
-----------------------	--------------------------------------	--------------------------



2800 EDINE

VGSI and descent angles not coincident  
(VGSI Angle 3.30/TCH 25).



ELEV 896 TDZE 896

REIL Rwy 5 and 23 1  
MIRL Rwy 5-23 1

CATEGORY	A	B	C	D
LNAV MDA	1460-1	564 (600-1)	1460-1½ 564 (600-1½)	NA