

APP CRS
249°

Rwy Idg
TDZE
Apt Elev

3503
1160
1160

RNAV (GPS) RWY 25

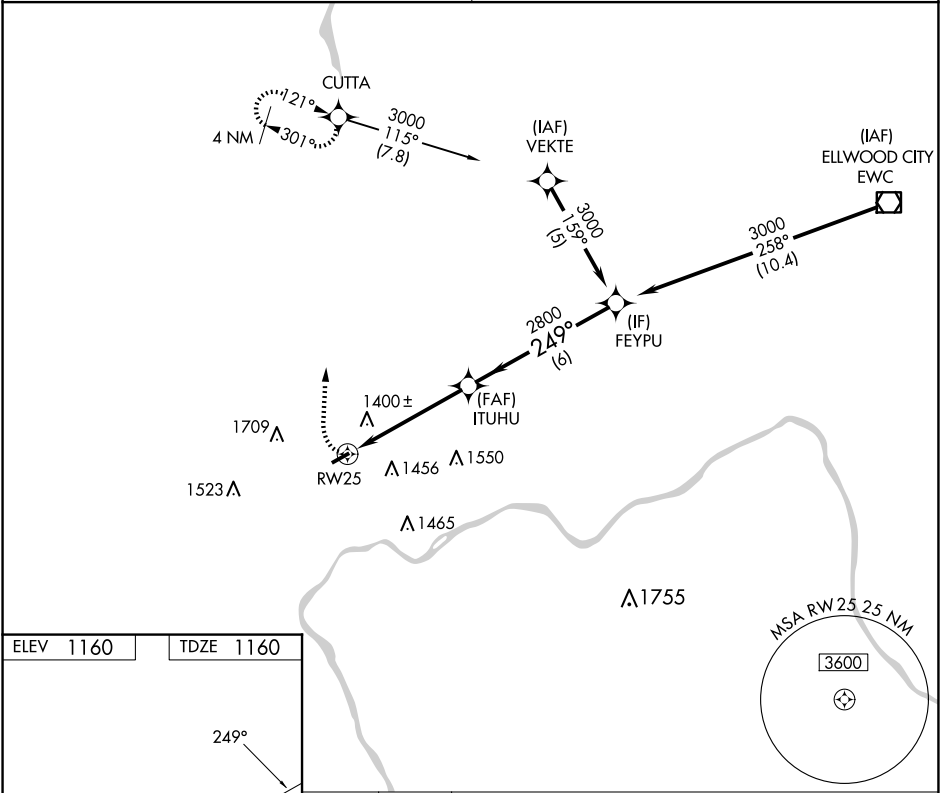
COLUMBIANA COUNTY (Ø2G)

NA

DME/DME RNP-0.3 NA. Use Pittsburgh Intl altimeter setting, when not received use Wheeling, WV altimeter setting and increase all MDA 20 feet; increase LNAV Cat C visibility ¼ SM, and Circling Cat A visibility ¼ SM. Rwy 25 helicopter visibility reduction below ¾ SM NA.

MISSED APPROACH: Climbing right turn to 3000 direct CUTTA and hold.

PITTSBURGH APP CON 124.75 338.2	UNICOM 123.0 (CTAF) Ø
------------------------------------	--------------------------



ELEV 1160

TDZE 1160

Diagram showing RWY 25 with a 249° heading, 0.5% UP, and 3505 X 75 dimensions.

3000 CUTTA

VGSI and descent angles not coincident (VGSI Angle 3.00/TCH 26).

FEYPU 3000

ITUHU 2800

Procedure Turn NA

5 NM

6 NM

CATEGORY	A	B	C	D
LNAV MDA	1760-1	600 (600-1)	1760-1½ 600 (600-1½)	NA
CIRCLING	1960-1 800 (800-1)	1960-1¼ 800 (800-1¼)	2080-2¾ 920 (1000-2¾)	NA

REIL Rwy 7-25 Ø

MIRL Rwy 7-25 Ø

EAST LIVERPOOL, OHIO

Orig-A 17JUN21

40°40'N-80°38'W

COLUMBIANA COUNTY (Ø2G)

RNAV (GPS) RWY 25