

LINDEN, MICHIGAN

AL-6232 (FAA)

23054

VORTAC FNT <b>116.9</b> Chan <b>116</b>	APP CRS <b>192°</b>	Rwy Idg TDZE Apt Elev	<b>N/A</b> <b>N/A</b> <b>920</b>
---	------------------------	-----------------------------	--

VOR-A  
PRICES (9G2)

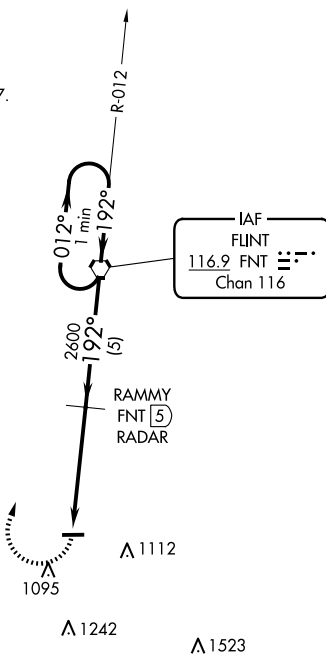
DME or RADAR required.

**T** Use Flint altimeter setting; when not received, use Howell altimeter setting.  
**A** NA Procedure NA at night.

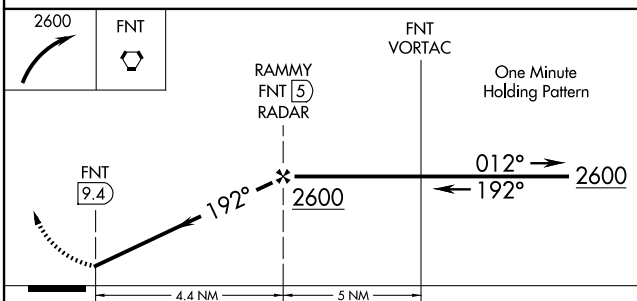
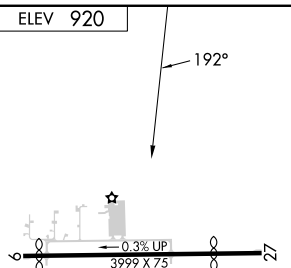
**MISSED APPROACH:** Climbing right turn to 2600 direct FNT VORTAC and hold.

FNT ASOS <b>133.15</b>	GREAT LAKES APP CON ★ <b>128.55 257.9</b>	UNICOM <b>123.0</b> (CTAF) <b>0</b>
---------------------------	--	--

NoPT for arrivals on  
FNT VORTAC  
airway radials 286 CW 097.



ELEV 920



FAF to MAP 4.4 NM						CATEGORY	A	B	C	D
Knots	60	90	120	150	180	CIRCLING	1460-1 540 (600-1)			NA
Min:Sec	4:24	2:56	2:12	1:46	1:28					

LINDEN, MICHIGAN

Orig-B 21JUN18

42°48'N-83°46'W

PRICES (9G2)  
VOR-A

EC-1, 10 JUL 2025 to 07 AUG 2025