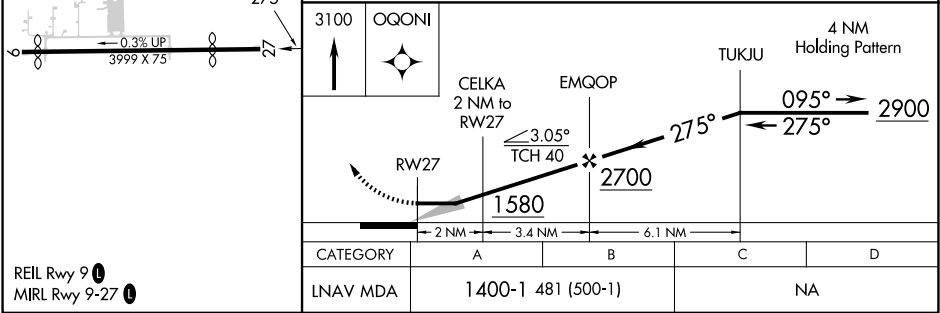
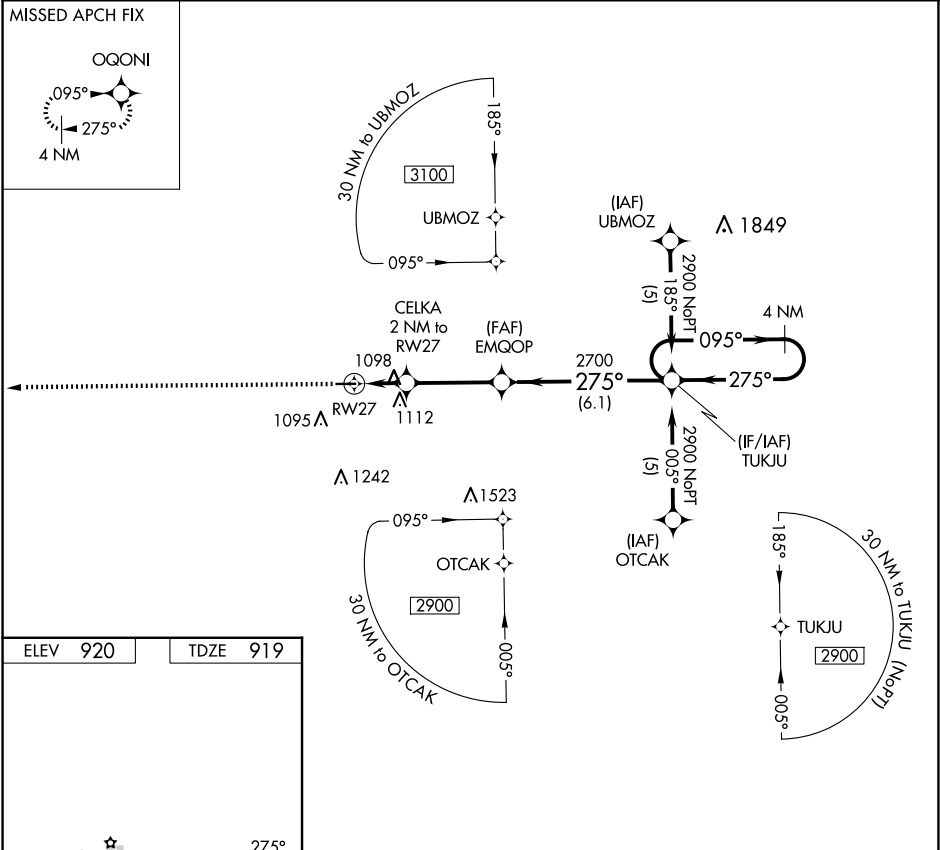


APP CRS	Rwy Idg	3199
275°	TDZE	919
	Apt Elev	920

RNAV (GPS) RWY 27

PRICES (9G2)

RNP APCH.		MISSED APPROACH: Climb to 3100 direct OQONI and hold.
▼	Use Flint altimeter setting; when not received, use Howell altimeter setting.	
▲ NA	Procedure NA at night. Rwy 27 helicopter visibility reduction below 1 SM NA.	
FNT ASOS 133.15		UNICOM 123.0 (CTAF) 0
GREAT LAKES APP CON ★ 128.55 257.9		



EC-1, 10 JUL 2025 to 07 AUG 2025

EC-1, 10 JUL 2025 to 07 AUG 2025