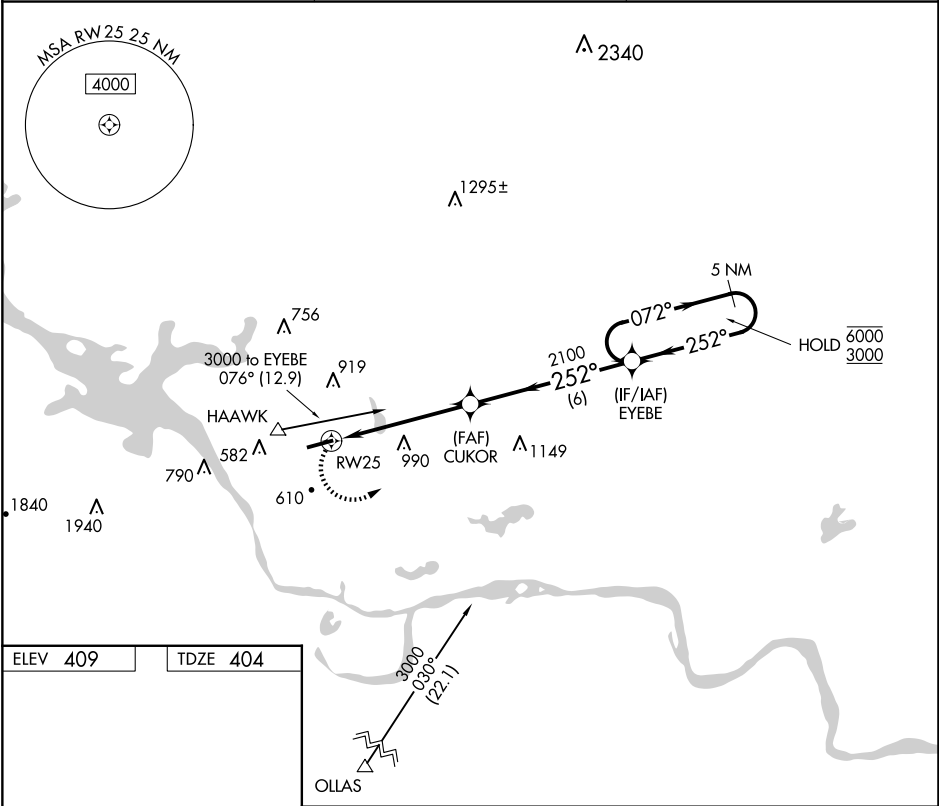


| | | |
|---------|----------|------|
| APP CRS | Rwy Idg | 4799 |
| 252° | TDZE | 404 |
| | Apt Elev | 409 |

RNAV (GPS) RWY 25
RUSSELLVILLE RGNL (RUE)

| | |
|--|--|
| RNP APCH - GPS. | MISSED APPROACH: Climbing left turn to 3000 direct EYEBE and hold. |
| ▼ Rwy 25 helicopter visibility reduction below 1 SM NA. Night landing: Rwy 25 NA. Straight-in Rwy 25 NA at night. Circling Rwy 25 NA at night. | |

| | | |
|-----------------|----------------------------------|--------------------------|
| ASOS 132.475 | MEMPHIS CENTER 128.475 377.15 | UNICOM 122.7 (CTAF) 0 |
|-----------------|----------------------------------|--------------------------|



3000

EYEBE

Visual Segment - Obstacles.

EYEBE

5 NM Holding Pattern

CUKOR

2100

RW25

5.2 NM

6 NM

| CATEGORY | A | B | C | D |
|----------|-----------------------|-------------------------|--------------------------|------------------------|
| LNAV MDA | 1260-1 856 (900-1) | 1260-1¼ 856 (900-1¼) | 1260-2½ | 856 (900-2½) |
| CIRCLING | 1260-1¼ | 851 (900-1¼) | 1340-2¾ 931 (1000-2¾) | 1400-3 991 (1000-3) |

REIL Rwy 7 and 25

MRL Rwy 7-25

SC-1, 10 JUL 2025 to 07 AUG 2025

SC-1, 10 JUL 2025 to 07 AUG 2025