

APP CRS
218°

Rwy Idg
TDZE
538

Apt Elev
538

RNAV (GPS) RWY 22

MALVERN MUNI (M78)

RNP APCH - GPS.

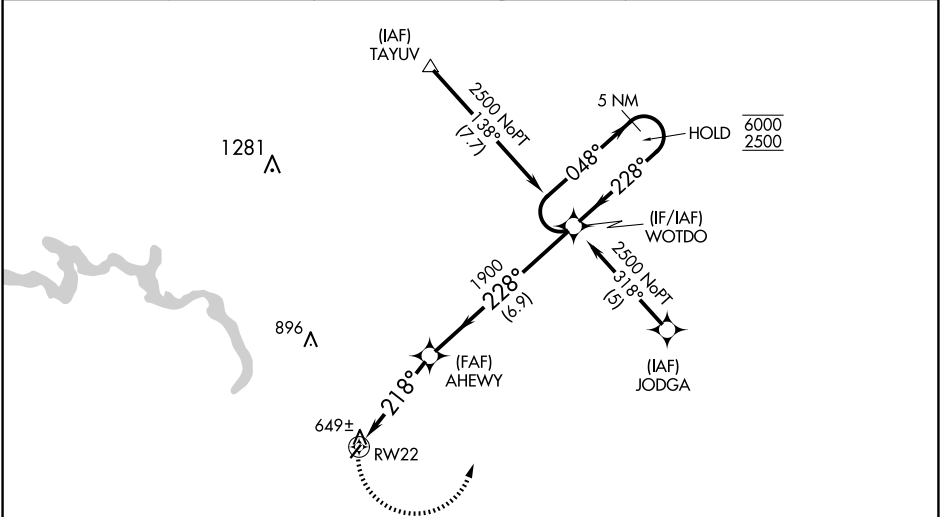
▼

NA

Rwy 22 helicopter visibility reduction below 1 SM NA. Use Hot Springs altimeter setting; when not received use Bill and Hillary Clinton Ntl/Adams Fld altimeter setting and increase all MDAs 80 feet. Procedure NA at night.

MISSED APPROACH: Climbing left turn to 2500 direct WOTDO and hold.

HOT ASOS 119.925	MEMPHIS CENTER 128.475 377.15	UNICOM 122.8(CTAF) 0
----------------------------	---	--------------------------------



ELEV 538

TDZE 538

218°

3188x40

2500

WOTDO

MSA RW22 25 NM

3300

Visual Segment - Obstacles.

5 NM Holding Pattern

WOTDO

5 NM

Holding Pattern

048°

6000

228°

2500

AHEWY

228°

1900

218°

RW22

4.1 NM

6.9 NM

CATEGORY	A	B	C	D
LNAV MDA	960-1	422 (500-1)	NA	
CIRCLING	1000-1 462 (500-1)	1080-1 542 (600-1)	NA	

MIRL Rwy 4-22 0