

LURAY, VIRGINIA

AL-6229 (FAA)

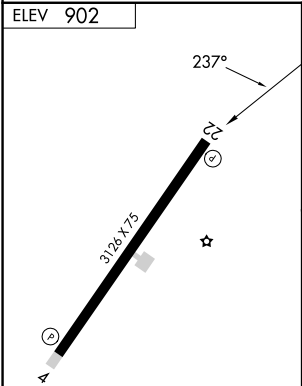
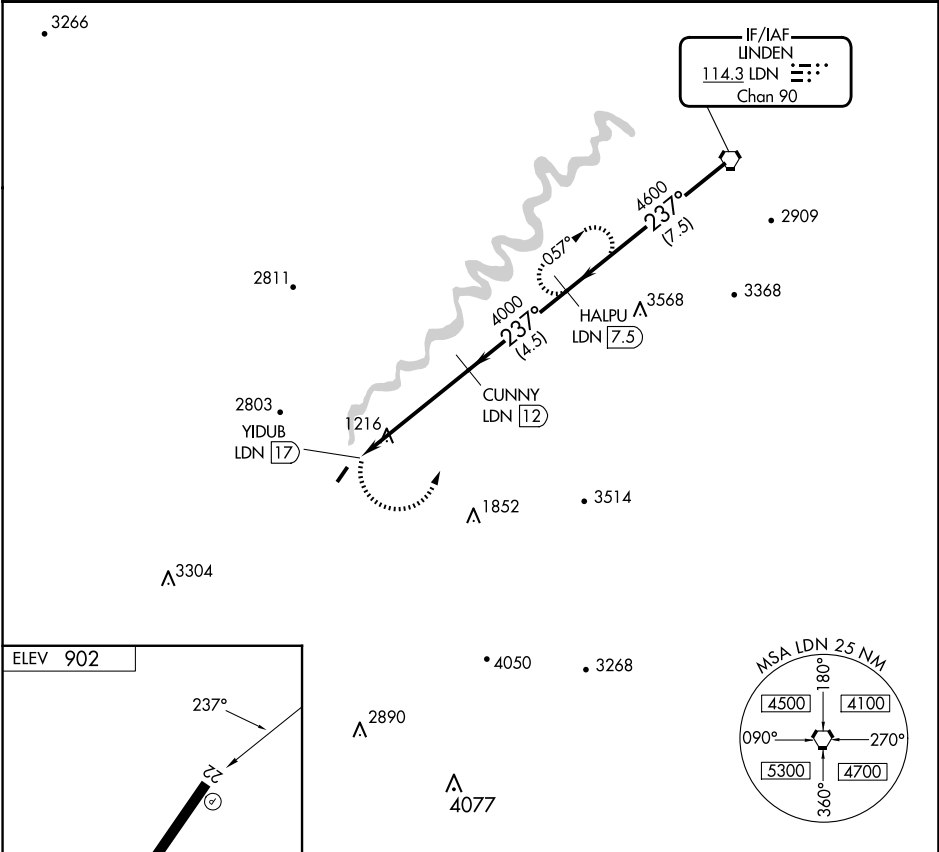
24081

VORTAC LDN	APP CRS	Rwy Idg	N/A
114.3	237°	TDZE	N/A
Chan 90		Apt Elev	902

VOR/DME-B
LURAY CAVERNS (LUA)

	Visibility reduction by helicopters NA. When local altimeter setting not received, use Staunton/Waynesboro/Harrisburg altimeter setting and increase all MDA 120 feet.	MISSED APPROACH: Climbing left turn to 4900 on LDN VORTAC R-237 to HALPU/LDN 7.5 DME and hold, continue climb-in-hold to 4900.
--	--	--

AWOS-3 118.275	WASHINGTON CENTER 133.2 282.2	UNICOM 122.8 (CTAF) 0
-------------------	----------------------------------	--------------------------



4900	HALPU LDN 7.5	CUNNY LDN 12	HALPU LDN 7.5	LDN VORTAC
LDN R-237				
	YIDUB LDN 17	4000	4600	4600
	5.0 NM	4.5 NM	7.5 NM	
CATEGORY	A	B	C	D
CIRCLING	2200-1¼ 1298 (1300-1¼)	2200-1½ 1298 (1300-1½)	NA	NA

REIL Rwy 4 and 22 0
MIRL Rwy 4-22 0

LURAY, VIRGINIA
Amdt 3B 25MAR21

38°40'N-78°30'W

LURAY CAVERNS (LUA)
VOR/DME-B

NE-3, 10 JUL 2025 to 07 AUG 2025

NE-3, 10 JUL 2025 to 07 AUG 2025