

LURAY, VIRGINIA

AL-6229 (FAA)

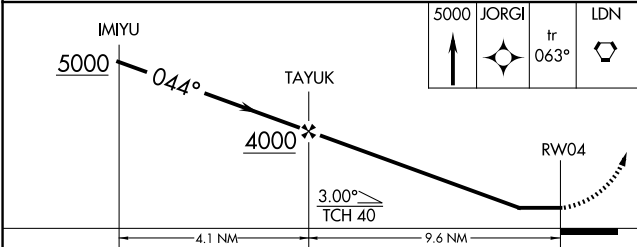
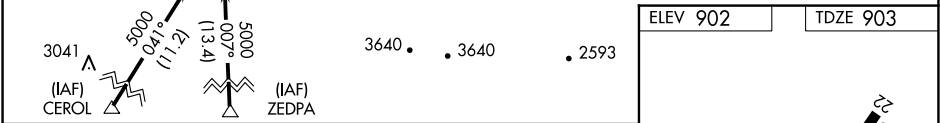
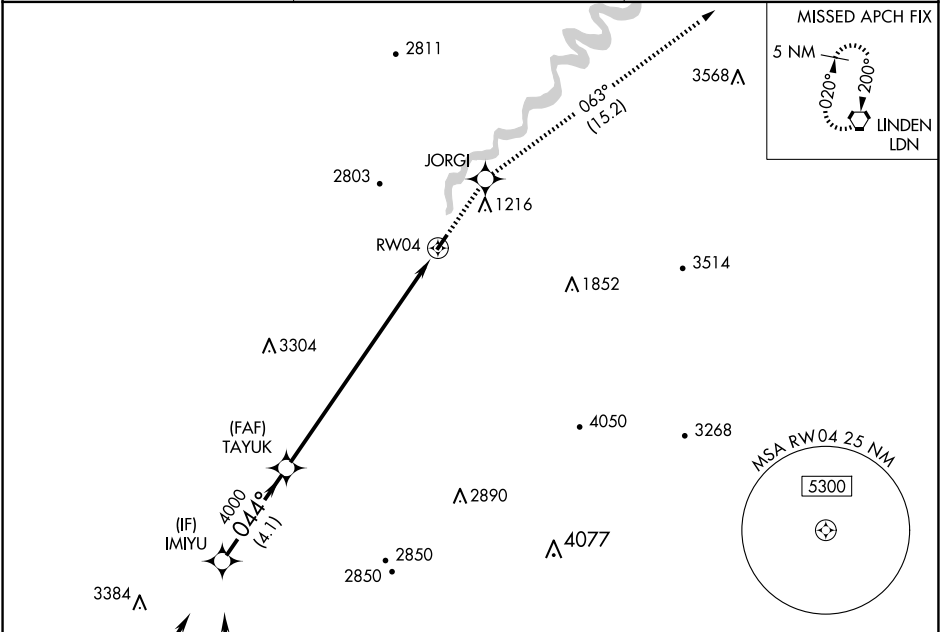
25051

WAAS CH 65727 W04A	APP CRS 044°	Rwy Idg TDZE Apt Elev	3126 903 902
--	------------------------	-----------------------------	---

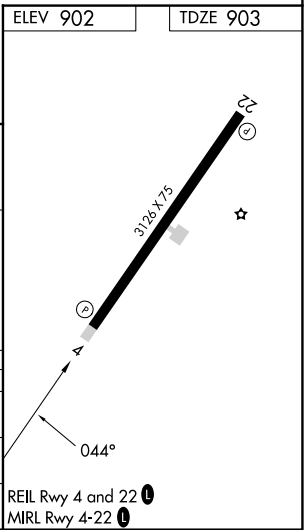
RNAV (GPS) RWY 4
LURAY CAVERNS (LUA)

<p>▽ ▲</p> <p>DME/DME RNP-0.3 NA. Helicopter visibility reduction below ¾ SM NA. When local altimeter setting not received, use Staunton/Waynesboro/Harrisonburg altimeter setting and increase all MDA 120 feet.</p>	<p>MISSED APPROACH: Climb to 5000 direct JORGI and on track 063° to LDN VORTAC and hold.</p>
---	--

AWOS-3 118.275	WASHINGTON CENTER 133.2 282.2	UNICOM 122.8 (CTAF) 0
--------------------------	---	---------------------------------



CATEGORY	A	B	C	D
LP MDA	2180-1¼ 1277 (1300-1¼)	2180-1½ 1277 (1300-1½)	NA	NA
LNAV MDA	2240-1¼ 1337 (1400-1¼)	2240-1½ 1337 (1400-1½)	NA	NA
CIRCLING	2240-1¼ 1338 (1400-1¼)	2240-1½ 1338 (1400-1½)	NA	NA



LURAY, VIRGINIA
Orig-C 25MAR21

38°40'N-78°30'W

LURAY CAVERNS (LUA)
RNAV (GPS) RWY 4

NE-3, 10 JUL 2025 to 07 AUG 2025

NE-3, 10 JUL 2025 to 07 AUG 2025