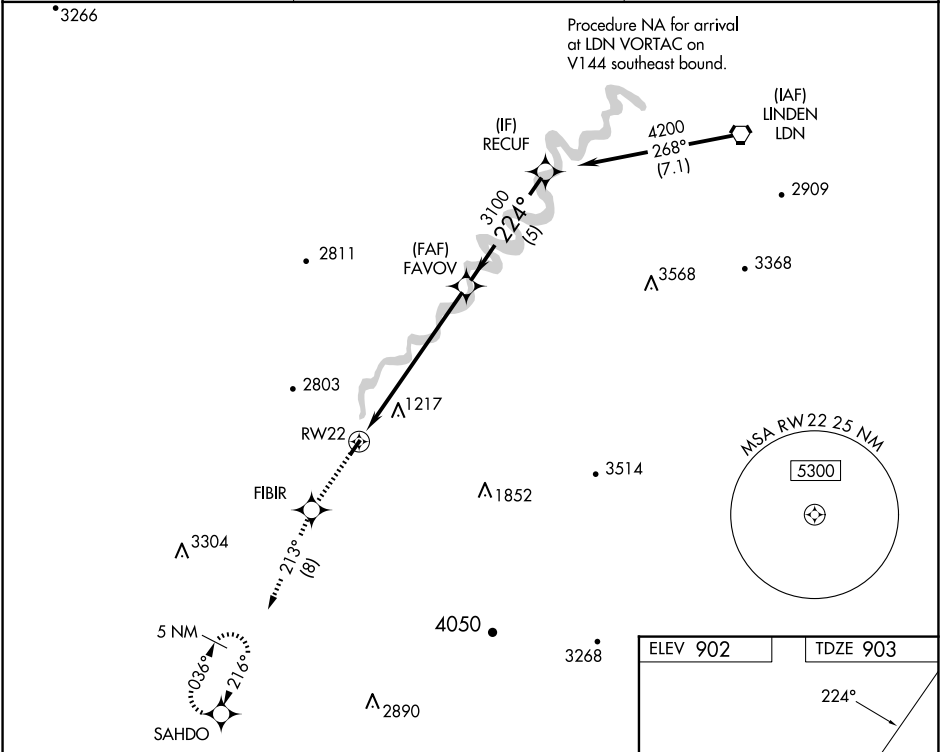


WAAS CH 77627 W22A	APP CRS 224°	Rwy Idg TDZE 903 Apt Elev 902	3126
--	------------------------	---	-------------

RNAV (GPS) RWY 22
LURAY CAVERNS (LUA)

<div><div>▼</div><div>▲</div></div>	DME/DME RNP-0.3 NA. Helicopter visibility reduction below $\frac{3}{4}$ SM NA. When local altimeter setting not received, use Staunton/Waynesboro/Harrisonburg altimeter setting and increase all MDA 120 feet; increase LNAV Cat B and Circling Cat B visibility $\frac{1}{4}$ mile.		MISSED APPROACH: Climb to 6000 direct FIBIR and on track 213° to SAHDO and hold, continue climb-in-hold to 6000.
	AWOS-3 118.275	WASHINGTON CENTER 133.2 282.2	UNICOM 122.8 (CTAF) 0



6000	FIBIR	tr 213°	SAHDO	
<div><div>RW22</div><div>FAVOV</div><div>RECUF</div><div>4200</div><div>3100</div><div>224°</div><div>3.00°</div><div>TCH 40</div><div>6.8 NM</div><div>5 NM</div></div>				
CATEGORY	A	B	C	D
LP MDA	1460-1	557 (600-1)	NA	NA
LNAV MDA	1820-1¼	917 (1000-1¼)	NA	NA
CIRCLING	1820-1¼	918 (1000-1¼)	NA	NA

