

WAAS
CH **63121**
W05A

APP CRS
045°

Rwy Idg
TDZE **135**
Apt Elev **137**

6003

RNAV (GPS) RWY 5

DUPLIN COUNTY (DPL)

RNP APCH.

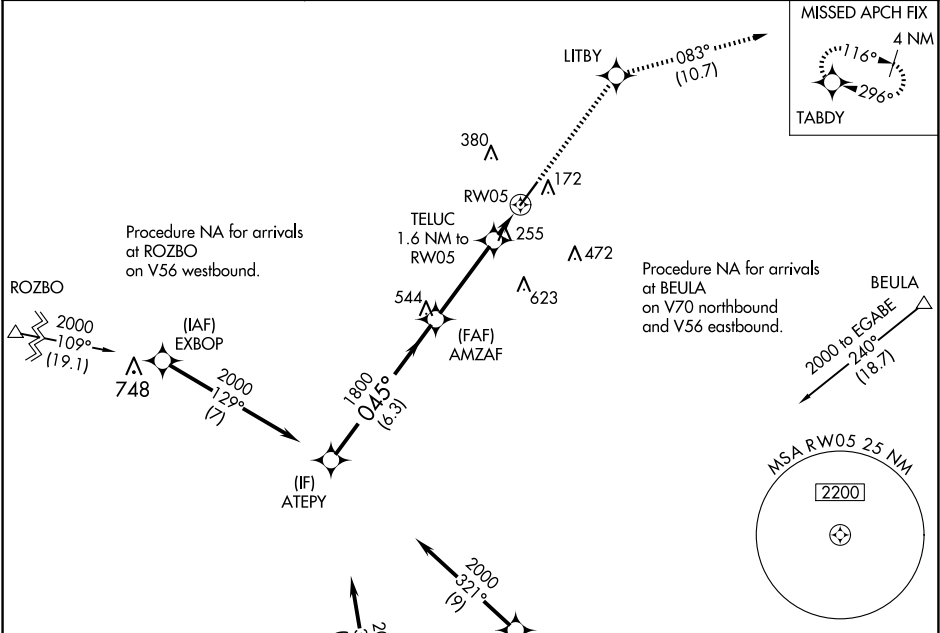
▼

For uncompensated Baro-VNAV systems, LNAV/VNAV NA below -15°C or above 54°C.

MISSED APPROACH:

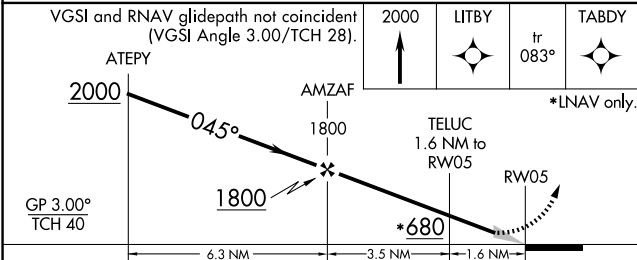
Climb to 2000 direct LITBY and on track 083° to TABDY and hold.

AWOS-3 120.675	SEYMOUR JOHNSON APP CON★ 119.7 273.6	UNICOM 123.0 (CTAF) 0
--------------------------	--	---------------------------------



ELEV 137

TDZE 135



CATEGORY	A	B	C	D
LPV DA		385-¾ 250 (300-¾)		
LNAV/VNAV DA		396-⅞ 261 (300-⅞)		
LNAV MDA	520-1 385 (400-1)		520-1⅛ 385 (400-1⅛)	

