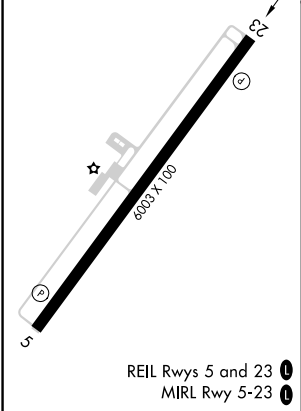
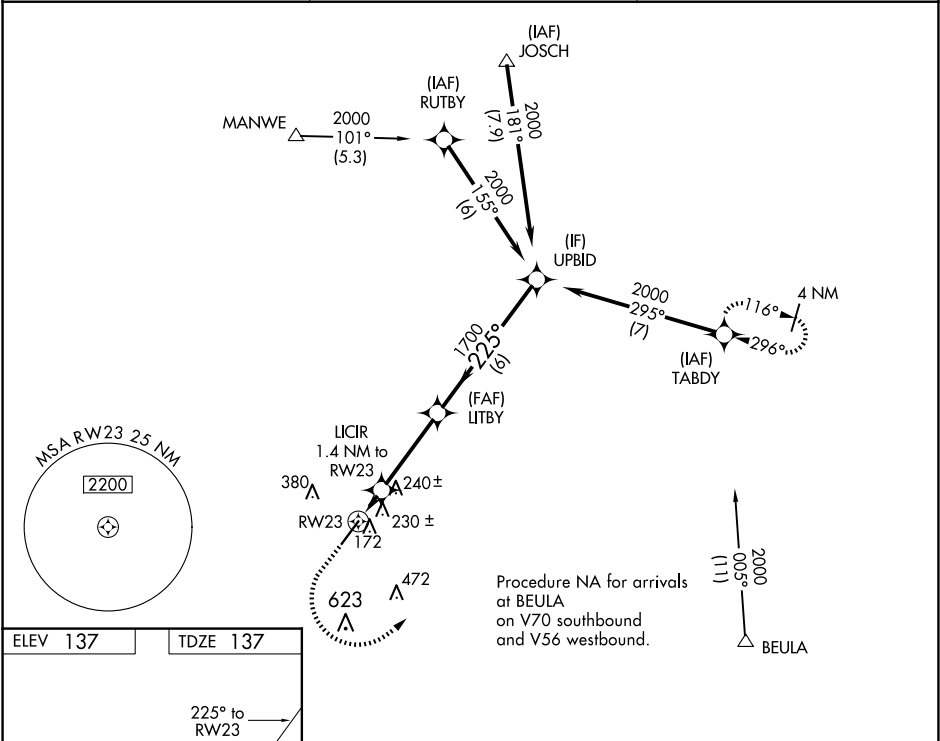


WAAS CH 69521 W23A	APP CRS 225°	Rwy Idg TDZE Apt Elev 137	6003 137 137
--	------------------------	--	---

RNAV (GPS) RWY 23

DUPLIN COUNTY (DPL)

RNP APCH. For uncompensated Baro-VNAV systems, LNAV/VNAV NA below -15°C or above 54°C.		MISSED APPROACH: Climb to 1000 then climbing left turn to 2000 direct TABDY and hold.
AWOS-3 120.675	SEYMOUR JOHNSON APP CON★ 119.7 273.6	UNICOM 123.0 (CTAF) 0



1000 2000 TABDY			
*LNAV only.			
RW23 1.4 NM to RW23 1700 225° 2000 UPBD			
*620 1700 GP 3.00° TCH 43			
-1.4 NM -3.4 NM -6 NM			
CATEGORY	A	B	C
LPV DA	337-¾ 200 (200-¾)		
LNAV/VNAV DA	407-⅞ 270 (300-⅞)		
LNAV MDA	480-1 343 (400-1)		