
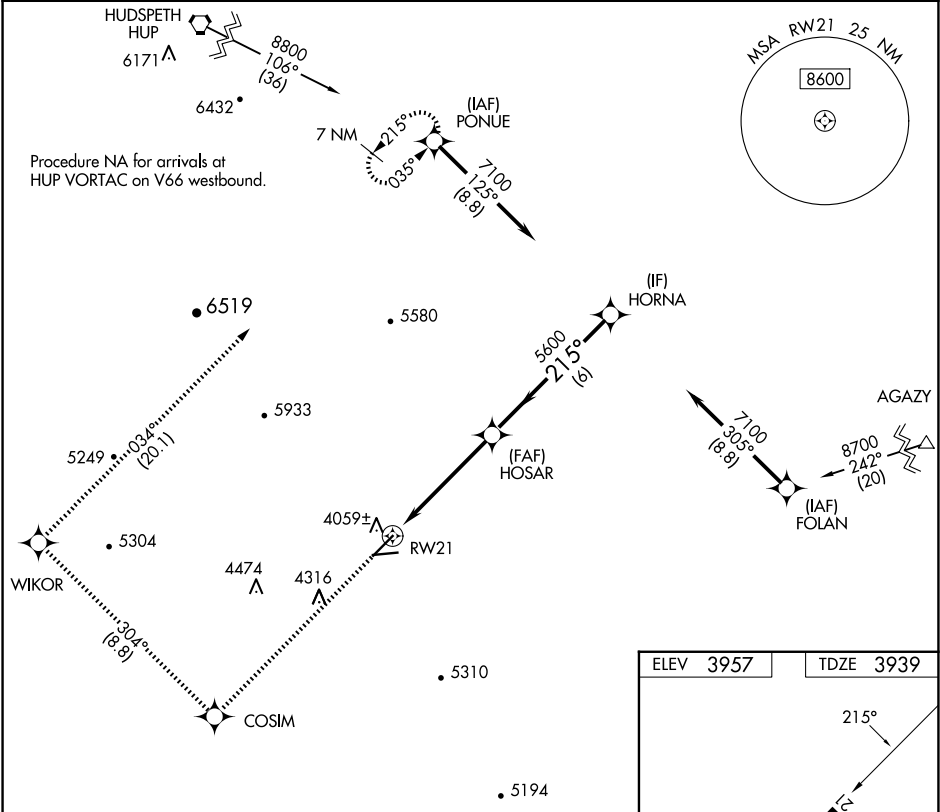


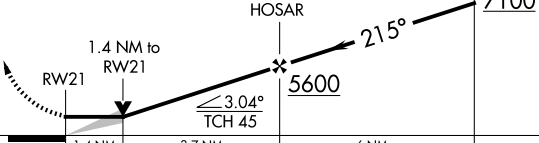

APP CRS	Rwy Idg	6005
215°	TDZE	3939
	Apt Elev	3957

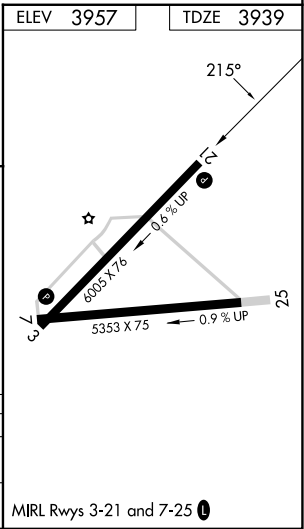
RNAV (GPS) RWY 21
CULBERSON COUNTY (VHN)

RNP APCH.	MISSED APPROACH: Climb to 8800 direct COSIM and on track 304° to WIKOR and on track 034° to PONUE and hold.
	Circling to Rwy 7, 25 NA at night. Circling NA south of Rwy 25 and southeast of Rwy 3.

AWOS-3PT 119.925	ALBUQUERQUE CENTER 135.875 292.15	CTAF 122.9 0
----------------------------	---	------------------------



8800	COSIM	tr 304°	WIKOR	tr 034°	PONUE
					
CATEGORY	A	B	C	D	
LNAV MDA	4400-1	461 (500-1)	4400-1 $\frac{3}{8}$	461 (500-1 $\frac{3}{8}$)	
 CIRCLING	4440-1 483 (500-1)	4540-1 583 (600-1)	4640-2 683 (700-2)	5580-3 1623 (1700-3)	



SC-3, 10 JUL 2025 to 07 AUG 2025

SC-3, 10 JUL 2025 to 07 AUG 2025