

WAAS CH 81933 W03A	APP CRS 033°	Rwy Idg 5000 TDZE 1019 Apt Elev 1019
--	------------------------	---

RNAV (GPS) RWY 3

MOUNT STERLING/MONTGOMERY COUNTY (IOB)

TANA

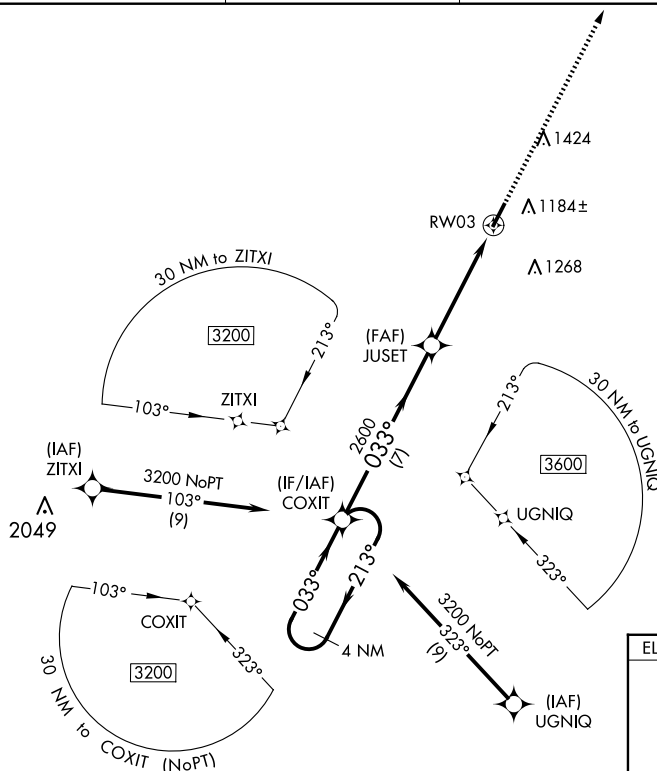
DME/DME RNP-0.3 NA. When local altimeter setting not received, use Lexington altimeter setting and increase all MDA 80 feet and all visibilities $\frac{1}{4}$ mile. Helicopter visibility reduction below $\frac{3}{4}$ SM NA.

MISSED APPROACH:
Climb to 3000 direct
FELPO and hold.

AWOS-3
120.675

LEXINGTON APP CON
120.15 259.3

GCO
121.72

CTAF
122.80

MISSED APCH FIX
4 NM
033°
213°
FELPO

