

WAAS CH <b>42830</b> <b>W21A</b>	APP CRS <b>213°</b>	Rwy Idg TDZE <b>1007</b> Apt Elev <b>1019</b>	<b>5000</b> <b>1007</b> <b>1019</b>
--	------------------------	---	---

RNAV (GPS) RWY 21

MOUNT STERLING/MONTGOMERY COUNTY (IOB)

RNP APCH - GPS.

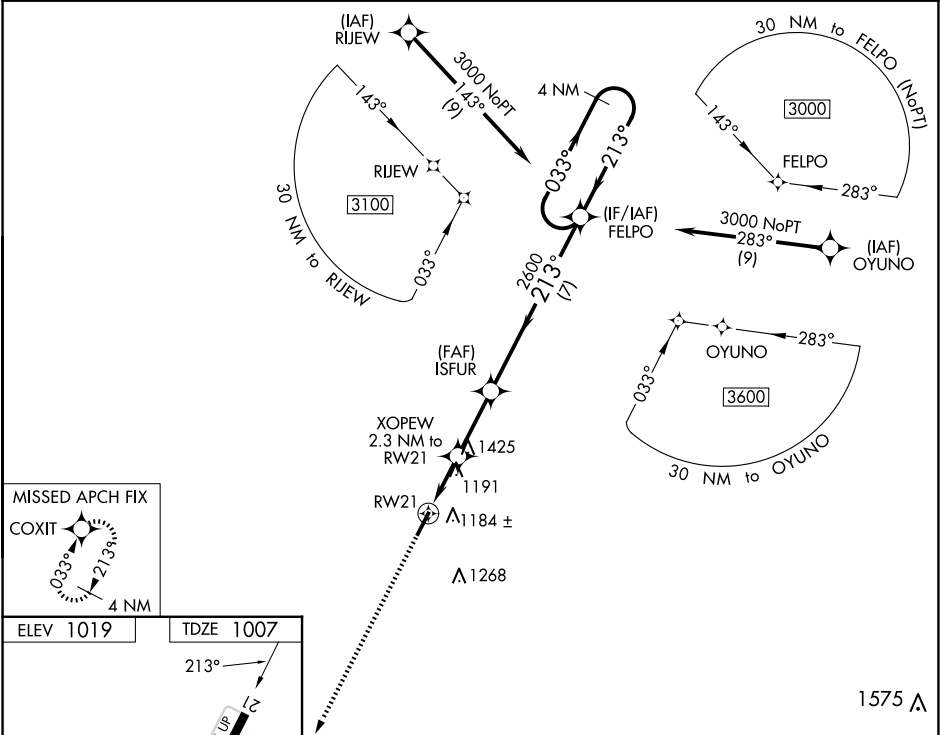
▼

▲ NA

For uncompensated Baro-VNAV systems, LNAV/VNAV NA below -17°C or above 54°C. When local altimeter setting not received, use Lexington altimeter setting and increase LPV DA to 1332 feet and all visibilities ¼ SM. Increase LNAV/VNAV DA to 1555 feet and all visibilities ¼ SM. Increase all MDAs 80 feet and LNAV visibility Cat C/D ⅓ SM, and Circling visibility Cat C/D ¼ SM. Baro-VNAV and VDP NA when using Lexington altimeter setting. Rwy 21 helicopter visibility reduction below ¼ SM NA.

MISSED APPROACH:  
Climb to 3000 direct COXIT and hold.

AWOS-3 <b>120.675</b>	LEXINGTON APP CON <b>120.15 259.3</b>	GCO <b>121.72</b>	CTAF <b>122.8</b>
--------------------------	--	----------------------	----------------------



ELEV 1019		TDZE 1007	
MIRL Rwy 3-21		REIL Rwy 3 and 21	
3000 COXIT		VGSI and RNAV glidepath not coincident (VGSI Angle 3.00/TCH 40).	
*LNAV only.		XOEWE 2.3 NM to RW21	
RW21		ISFUR 2600	
1.4 NM to RW21		1760*	
0.9 NM		2600	
2.6 NM		7 NM	
CATEGORY		A B C D	
LPV DA		1257-¾ 250 (300-¾)	
LNAV/VNAV DA		1480-1½ 473 (500-1½)	
LNAV MDA		1460-1 453 (500-1) 1460-1½ 453 (500-1½)	
C CIRCLING		1540-1 521 (600-1) 1560-1 541 (600-1) 1740-2 721 (800-2) 1740-2¼ 721 (800-2¼)	