

VOR/DME CNG	APP CRS	Rwy Idg	N/A
113.1	137°	TDZE	N/A
Chan 78		Apt Elev	522

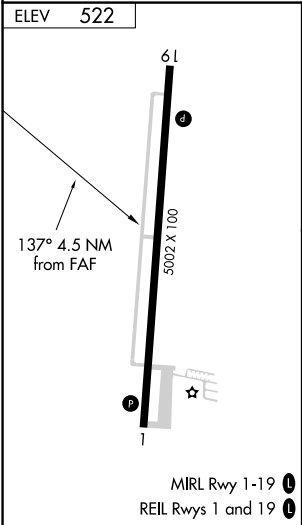
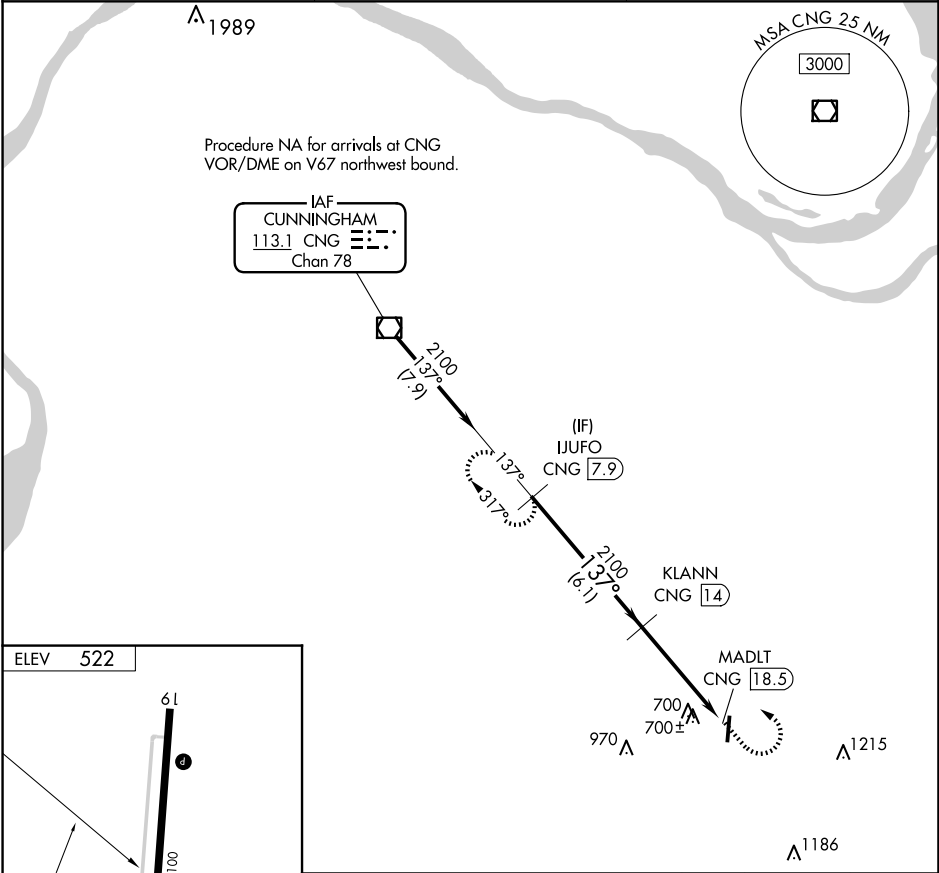
VOR/DME-A
MAYFIELD GRAVES COUNTY (M25)

NA

Circling Rwy 1 NA at night. When local altimeter setting not received, use Paducah altimeter setting: increase all MDAs 80 feet and visibility Cats C and D ¼ SM.

MISSED APPROACH: Climb to 1200 then climbing left turn to 2300 on CNG VOR/DME R-137 to IUFO 7.9 DME and hold.

AWOS-3 120.625	MEMPHIS CENTER 133.65 292.15	UNICOM 122.8 (CTAF)
-------------------	---------------------------------	------------------------



	IUFO CNG 7.9		KLANN CNG 14		1200	2300	IUFO CNG 7.9
	2100		2100		CNG R-137		
	6.1 NM		4.5 NM		MADLT CNG 18.5		
CATEGORY	A	B	C	D			
CIRCLING	1060-1	538 (600-1)	1060-1½ 538 (600-1½)	1280-2½ 758 (800-2½)			

SE-1, 10 JUL 2025 to 07 AUG 2025

SE-1, 10 JUL 2025 to 07 AUG 2025