

WAAS CH 40034 W01A	APP CRS 006°	Rwy Idg TDZE 522 Apt Elev 522
--	------------------------	---

RNAV (GPS) Z RWY 1

MAYFIELD GRAVES COUNTY (M25)

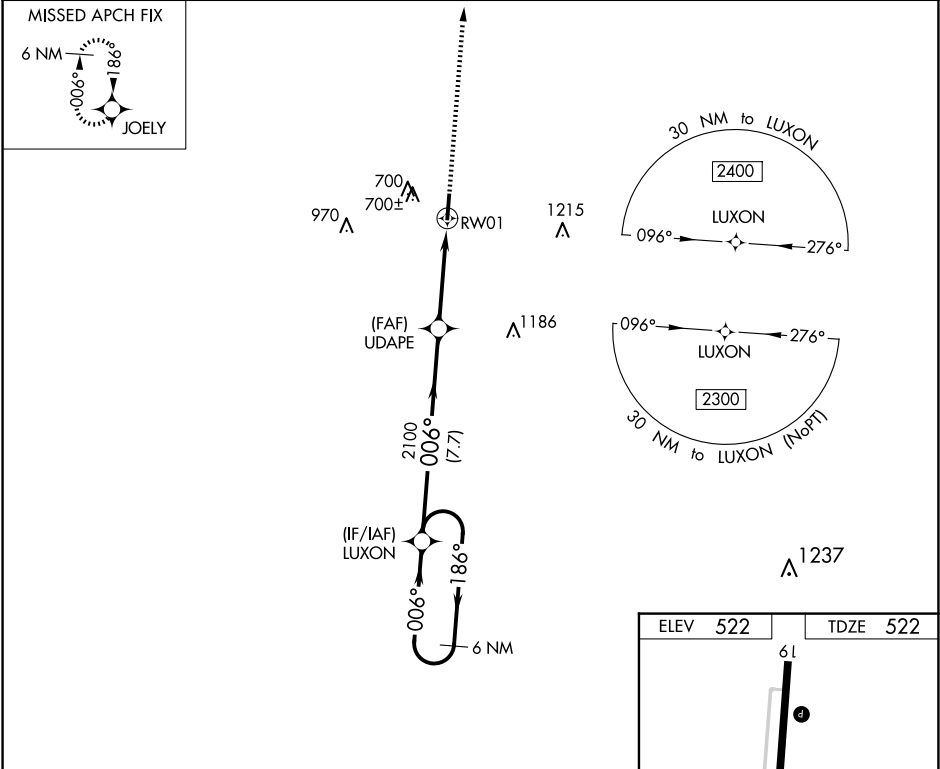
▼

▲NA

Baro-VNAV NA when using Paducah altimeter setting. For uncompensated Baro-VNAV systems, LNAV/VNAV NA below -16°C (4°F) or above 54°C (130°F).
DME/DME RNP-0.3 NA. When local altimeter setting not received, use Paducah altimeter setting and increase all DA 61 feet; increase LNAV/VNAV Cats A and B visibility ¼ mile.
Rwy 1, 19 helicopter visibility reduction below 1 SM NA. Procedure NA at night.

MISSED APPROACH:
Climb to 2400 direct
JOELY and hold.

AWOS-3 120.625	MEMPHIS CENTER 133.65 292.15	UNICOM 122.8 (CTAF) 0
--------------------------	--	---------------------------------



6 NM Holding Pattern

LUXON

2300

186°

006°

GP 3.60°

TCH 60

UDAPE

2100

006°

7.7 NM

4 NM

RW01

2400

JOELY

CATEGORY	A	B	C	D
LPV DA	820-1	298 (300-1)	NA	
LNAV/VNAV DA	932-1½	410 (500-1½)	NA	

ELEV 522

TDZE 522

61

5002 X 100

006° to RW01

MIRL Rwy 1-19

REIL Rws 1 and 19