

WAAS CH 78432 W01B	APP CRS 006°	Rwy Idg TDZE 522 Apt Elev 522
--	------------------------	---

RNAV (GPS) Y RWY 1

MAYFIELD GRAVES COUNTY (M25)

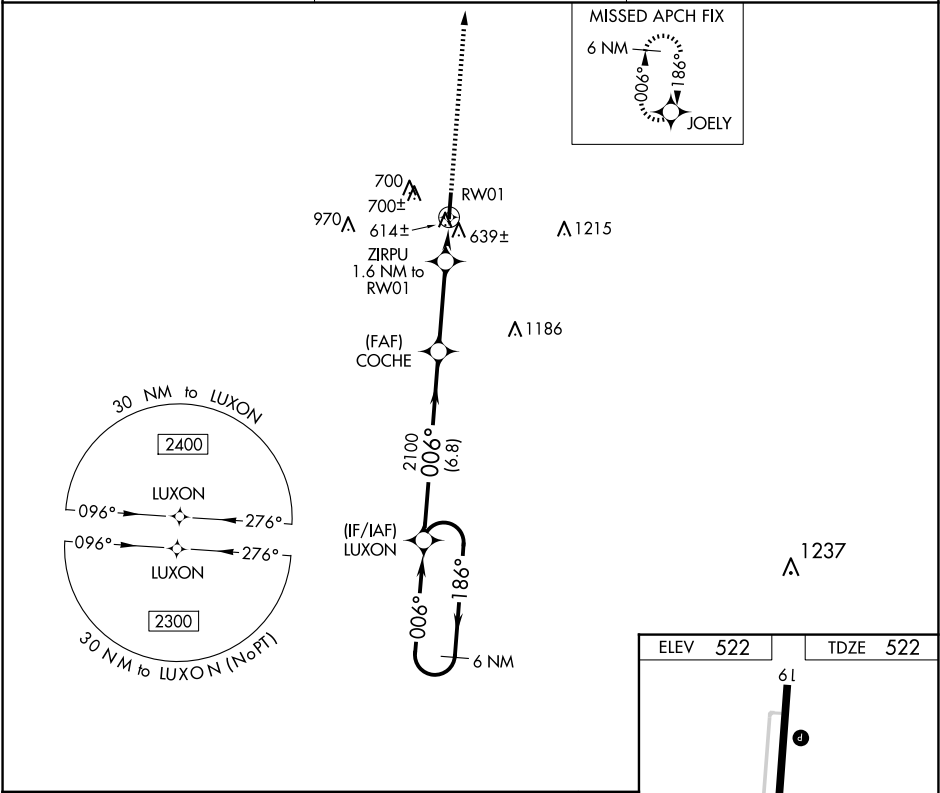
▼

▲NA

DME/DME RNP-0.3 NA. When local altimeter setting not received, use Paducah altimeter setting and increase all MDA 80 feet and increase LP Cat C and D visibility ¾ mile and LNAV Cat C and D visibility and Circling Cat C and D visibility ¼ mile. Rwy 1, 19 helicopter visibility reduction below 1 SM NA. Procedure NA at night.

MISSED APPROACH:
Climb to 2400 direct
JOELY and hold.

AWOS-3 120.625	MEMPHIS CENTER 133.65 292.15	UNICOM 122.8 (CTAF) 0
--------------------------	--	---------------------------------



6 NM Holding Pattern

LUXON

2400 JOELY

2300 ← 186°

006° →

006°

COCHE

3.00° TCH 40

ZIRPU 1.6 NM to RW01

2100

1060

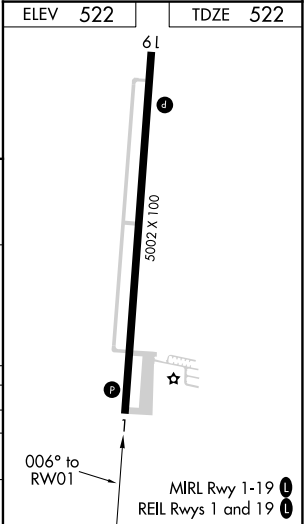
RW01

6.8 NM

3.2 NM

1.6 NM

CATEGORY	A	B	C	D
LP MDA	880-1 358 (400-1)			
LNAV MDA	900-1 378 (400-1)		900-1½ 378 (400-1½)	
CIRCLING	1060-1 538 (600-1)		1060-1½ 538 (600-1½) 1280-2½ 758 (800-2½)	



SE-1, 10 JUL 2025 to 07 AUG 2025

SE-1, 10 JUL 2025 to 07 AUG 2025