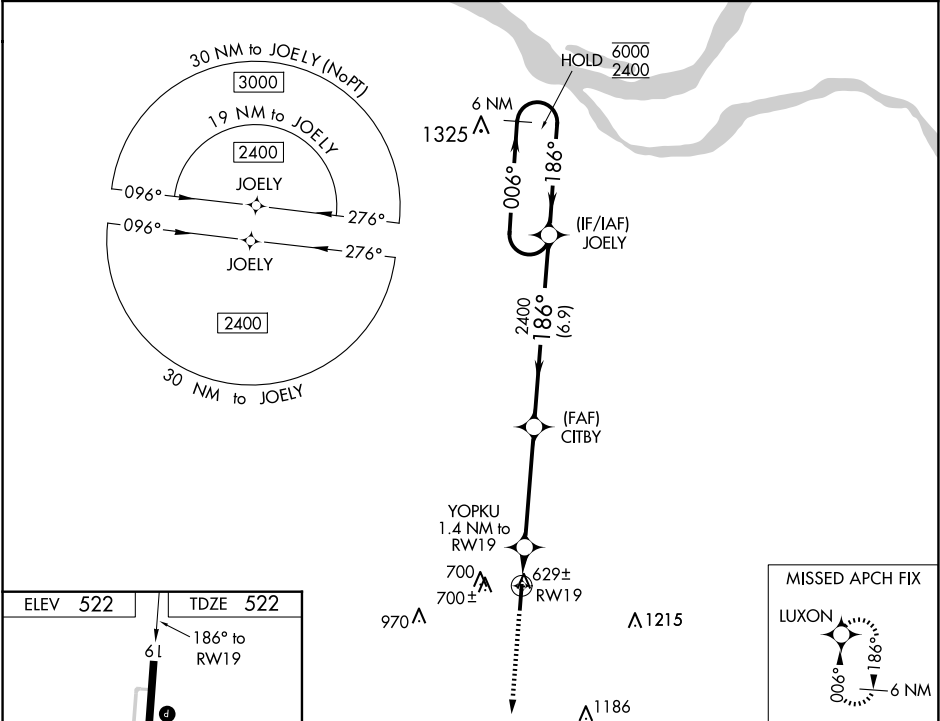


WAAS CH 58332 W19A	APP CRS 186°	Rwy Idg TDZE 522 Apt Elev 522
--	------------------------	---

RNAV (GPS) RWY 19
MAYFIELD GRAVES COUNTY (M25)

RNP APCH - GPS.	<p>⚠ Circling Rwy 1 NA at night. Rwy 19 helicopter visibility reduction below ¾ SM NA. Baro-VNAV NA when using Paducah altimeter setting. For uncompensated Baro-VNAV systems, LNAV/VNAV NA below -16°C or above 54°C. When local altimeter setting not received, use Paducah altimeter setting: increase LPV DA to 833 feet, LNAV/VNAV DA to 977 feet and all visibilities ¼ SM; increase all MDAs 80 feet and visibility Cats C and D ¼ SM.</p>	MISSED APPROACH: Climb to 2300 direct LUXON and hold.
-----------------	---	--

AWOS-3 120.625	MEMPHIS CENTER 133.65 292.15	UNICOM 122.8 (CTAF) 0
--------------------------	--	---------------------------------



ELEV 522	TDZE 522	MIRL Rwy 1-19 0 REIL Rws 1 and 19 0			
186° to RW19		MISSED APCH FIX LUXON			
61		2300 LUXON			
5002 X 100		VGSI and RNAV glidepath not coincident (VGSI Angle 3.00/TCH 35).			
1		YOPKU 1.4 NM to RW19			
1020		CITBY 2400			
1.4 NM		6.9 NM			
4.3 NM		6 NM Holding Pattern			
186°		JOELY			
006°		6000			
186°		2400			
GP 3.00°		TCH 56			
CATEGORY	A	B	C	D	
LPV DA	772-1 250 (300-1)				
LNAV/VNAV DA	916-1½ 394 (400-1½)				
LNAV MDA	880-1 358 (400-1)				
CIRCLING	1060-1 538 (600-1)	1060-1½ 538 (600-1½)	1280-2½ 758 (800-2½)		

SE-1, 10 JUL 2025 to 07 AUG 2025

SE-1, 10 JUL 2025 to 07 AUG 2025