

WAAS

CH **78015**

W12A

APP CRS

117°

Rwy Idg

4402

TDZE

319

Apt Elev

319

RNAV (GPS) RWY 12

HART (3R4)

RNP APCH.

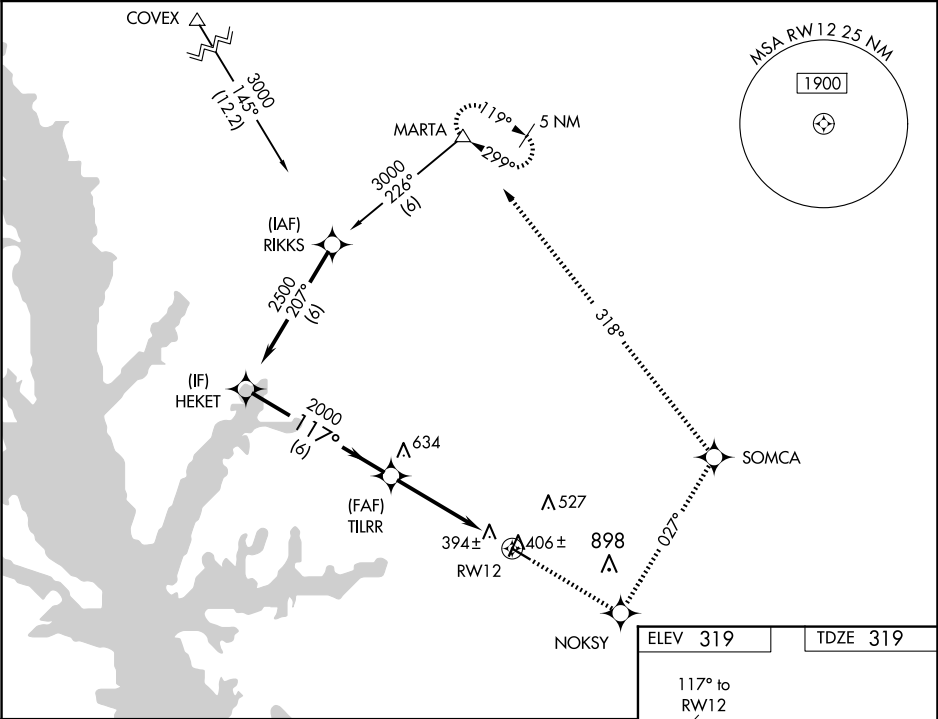
▼

NA

Baro-VNAV NA. Use Fort Polk altimeter setting; when not received, use Natchitoches altimeter setting; increase LPV DA to 715 feet, LNAV/VNAV DA to 767 feet, and all MDA 20 feet, and increase LPV visibility all Cats ¼ SM.

MISSED APPROACH: Climb to 4500 direct NOKSY and left turn via track 027° to SOMCA and left turn via track 318° to MARTA and hold.

POLK APP CON 123.7 261.3	GCO 135.075	UNICOM 122.8 (CTAF)
------------------------------------	-----------------------	-------------------------------



Procedure Turn NA

HEKET

2500

GP 3.00° TCH 50

117°

TILRR

2000

6 NM

5.1 NM

RW12

4500

NOKSY

tr 027°

SOMCA

tr 318°

MARTA

CATEGORY	A	B	C	D
LPV DA	713-1¼	394 (400-1¼)		NA
LNAV/VNAV DA	765-1½	446 (500-1½)		NA
LNAV MDA	820-1 501 (600-1)	820-1½ 501 (600-1½)		NA
CIRCLING	940-1 621 (700-1)	1280-3 961 (1000-3)		NA

117° to RW12

4402 X 75

0.3% UP

REIL Rwy 12 and 30

MIRL Rwy 12-30