

APP CRS <b>182°</b>	Rwy Idg TDZE Apt Elev	<b>3172</b> <b>N/A</b> <b>269</b>
------------------------	-----------------------------	---

RNAV (GPS)-A  
HOPEDALE INDUSTRIAL PARK (1B6)

RNP APCH.

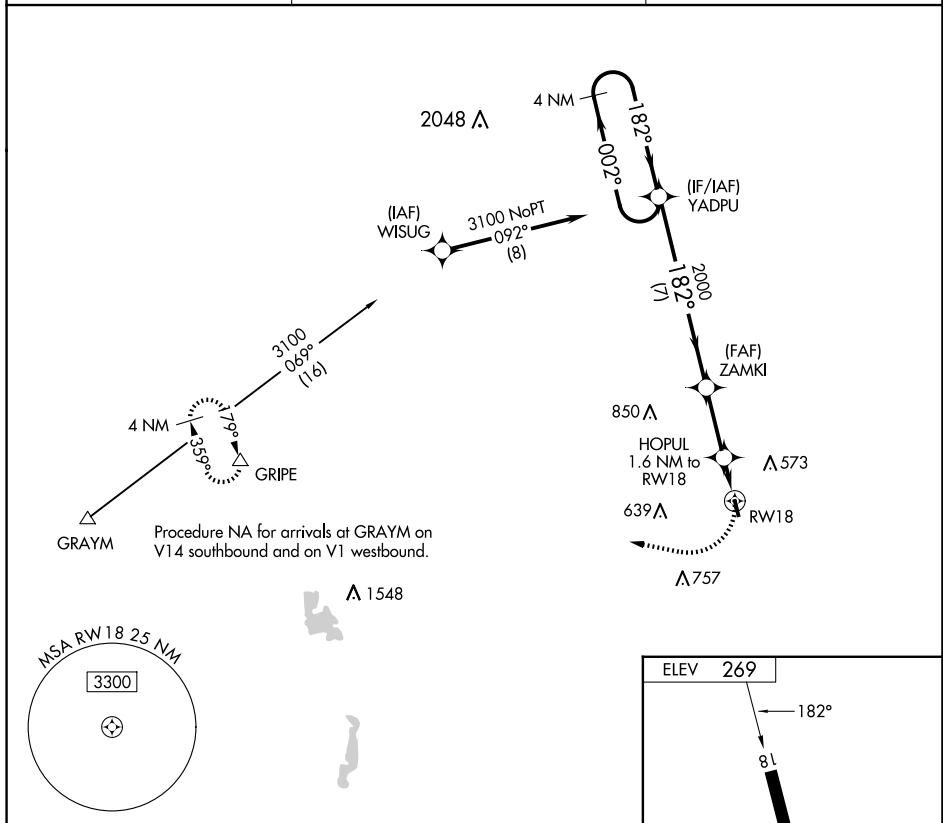
**T** Use Pawtucket altimeter setting; when not received, procedure NA.  
**A** NA Procedure NA at night. Rwy 18 helicopter visibility reduction below 1 SM NA.

**MISSED APPROACH:**  
Climbing right turn to 3000  
direct GRIPE and hold.

SFZ AWOS-3  
120.775

YANKEE APP CON  
119.0

UNICOM  
122.8 (CTAF)



NE-1, 10 JUL 2025 to 07 AUG 2025

