

WAAS CH 78125 W27A	APP CRS 268°	Rwy Ldg TDZE Apt Elev	4799 2728 2729
--	------------------------	-----------------------------	---

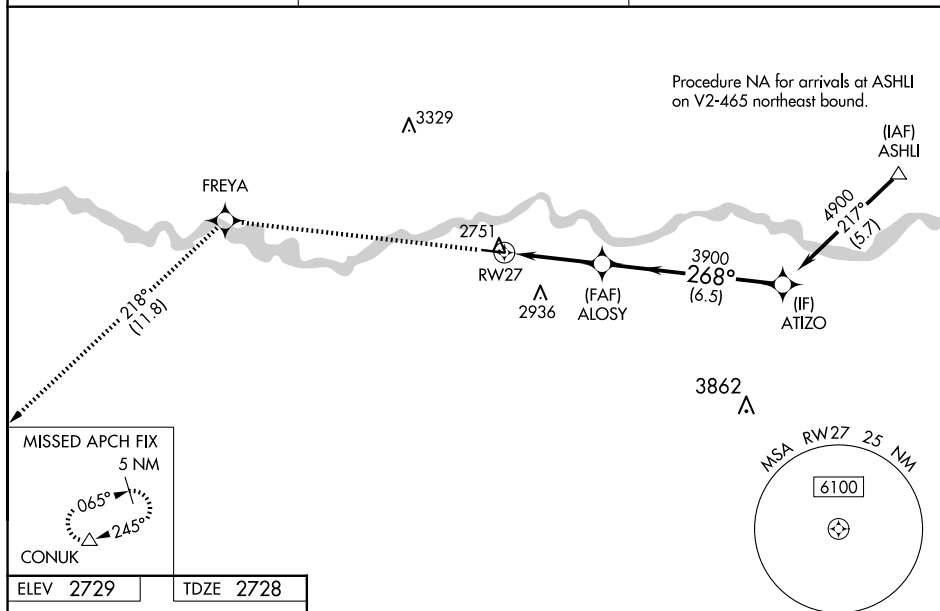
RNAV (GPS) RWY 27
TILLITT FLD (1S3)

T
A NA

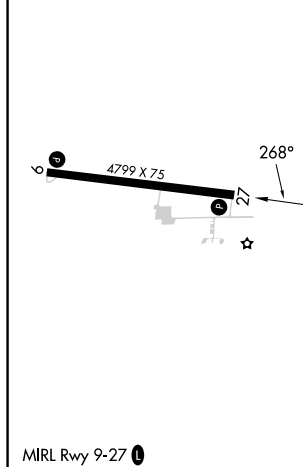
For uncompensated Baro-VNAV systems, LNAV/VNAV NA below -20°C (-4°F) or above 53°C (128°F). DME/DME RNP-0.3 NA. Helicopter visibility reduction below ¾ SM NA. When local altimeter setting not received, use Miles City altimeter setting: increase LPV and LNAV/VNAV DA to 3066 and all visibilities ¾ mile. Increase all MDA 100 feet and all Cat C and D visibilities ¾ mile. VDP and Baro-VNAV NA when using Miles City altimeter setting.

MISSED APPROACH: Climb to 6000 direct FREYA and on track 218° to CONUK and hold.

AWOS-AV 122.8	SALT LAKE CENTER 126.85 305.2	UNICOM 122.8 (CTAF) 0
-------------------------	---	---------------------------------



ELEV 2729	TDZE 2728
-----------	-----------



The diagram shows the ALOSY VOR/DME station located 2.6 NM from the runway end (RW27) and 3.9 NM from the intersection of the runway extension and the 4900 road. The bearing from the runway end to the station is 218°. The bearing from the station to the 4900 road is 268°. The distance from the runway end to the 4900 road along the runway axis is 6.5 NM. The diagram also indicates the presence of a GP 3.00° TCH 51°.