

WAAS
CH **82130**
W09A

APP CRS
085°

Rwy Idg **3400**
TDZE **1522**
Apt Elev **1523**

RNAV (GPS) RWY 9
LANGLADE COUNTY (AIG)

RNP APCH.

▼

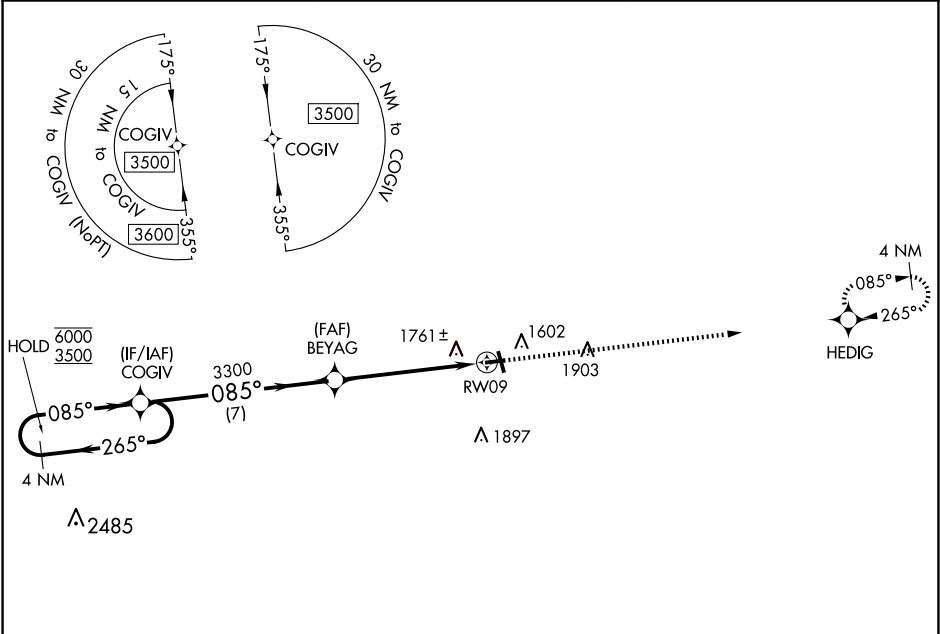
⚠

Rwy 9 helicopter visibility reduction below $\frac{3}{4}$ SM NA.

For uncompensated Baro-VNAV systems, LNAV/VNAV NA below -18C or above 54°C.

MISSED APPROACH:
Climb to 3400 direct
HEDIG and hold.

AWOS-3 119.075	MINNEAPOLIS CENTER 124.4 317.7	UNICOM 122.8 (CTAF) 0
--------------------------	--	---------------------------------



4 NM
Holding Pattern

COGIV

BEYAG

RW09

HEDIG

3400

3500

6000

GP 3.00°
TCH 40

7 NM

3.9 NM

1.6 NM

*1.6 NM to
RW09

*LNAV only.

CATEGORY	A	B	C	D
LPV DA	1772-1 250 (300-1)			
LNAV/VNAV DA	2135-2¼ 613 (700-2¼)			
LNAV MDA	2080-1 558 (600-1)		2080-1½ 558 (600-1½)	
CIRCLING	2120-1 597 (600-1)		2260-2 737 (800-2) 2260-2¼ 737 (800-2¼)	

ELEV 1523

TDZE 1522

REL Rwy 17 and 35

MIRL Rwy 17-35 and 9-27