

WAAS
CH **45732**
W35A

APP CRS
346°

Rwy Idg
TDZE
Apt Elev

4010
1522
1523

RNAV (GPS) RWY 35

LANGLADE COUNTY (AIG)

RNP APCH - GPS.

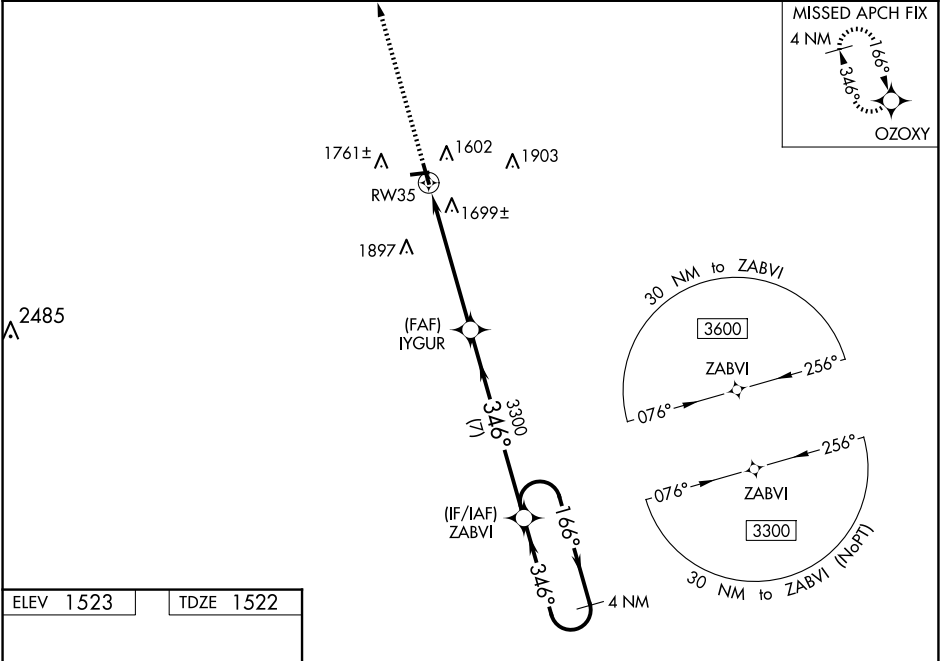
▼

▲

For uncompensated Baro-VNAV systems, LNAV/VNAV NA below -18°C or above 54°C .
Baro-VNAV and VDP NA when using AUW altimeter setting. Helicopter visibility reduction below ¾ SM NA. When local altimeter setting not received, use AUW altimeter setting and increase LPV DA to 1877 feet and all visibilities ¼ SM. Increase LNAV/VNAV DA to 2124 feet and all visibilities ⅓ SM. Increase all MDAs 120 feet and LNAV visibility Cat C/D ⅓ SM, and Circling visibility Cat C/D ½ SM.

MISSED APPROACH:
Climb to 3400 direct
OZOOXY and hold.

AWOS-3 119.075	MINNEAPOLIS CENTER 124.4 317.7	UNICOM 122.8 (CTAF) 0
--------------------------	--	---------------------------------



ELEV 1523 TDZE 1522

REIL Rwy 17 and 35
MIRL Rwy 17-35 and 9-27

3400 OZOOXY

VGSI and RNAV glidepath not coincident
(VGSI Angle 3.00/TCH 36).

4 NM Holding Pattern

3300 166° 346° 3300 GP 3.00° TCH 40

CATEGORY	A	B	C	D
LPV DA	1772-1		250 (300-1)	
LNAV/VNAV DA	2019-1¾		497 (500-1¾)	
LNAV MDA	1960-1	438 (500-1)	1960-1¼	438 (500-1¼)
CIRCLING	2120-1	597 (600-1)	2260-2 737 (800-2)	2260-2¼ 737 (800-2¼)