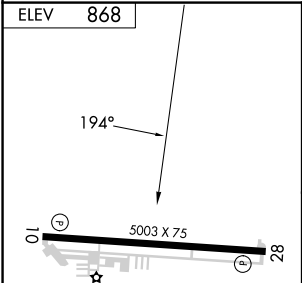
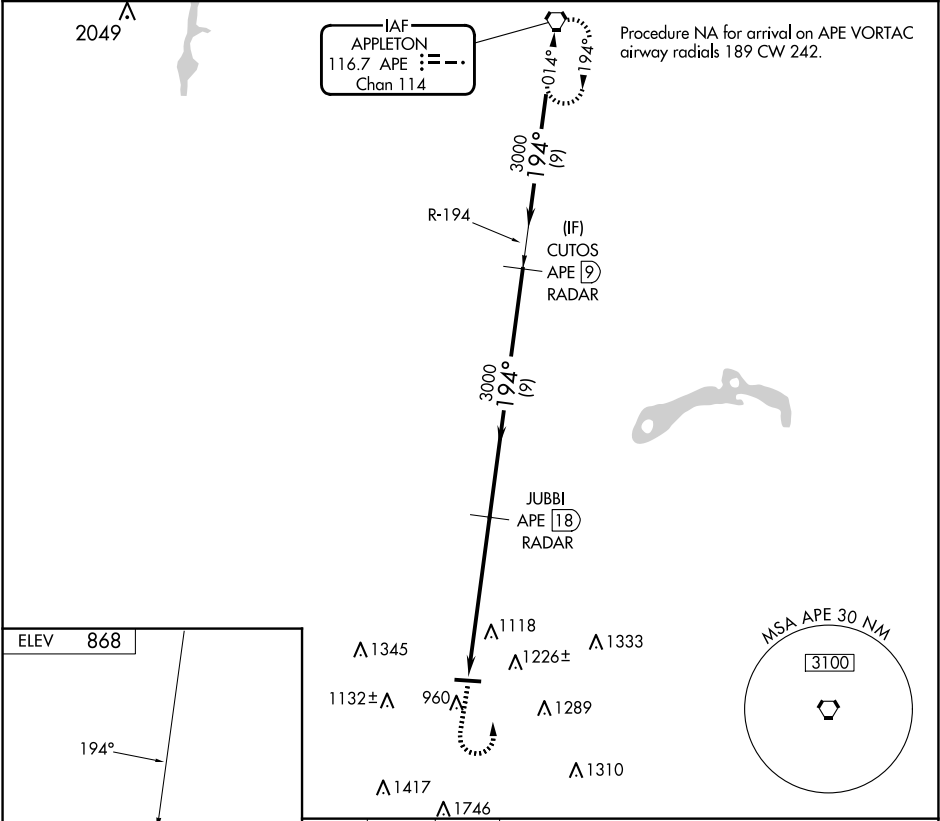


VORTAC APE	APP CRS	Rwy Idg	N/A
116.7	194°	TDZE	N/A
Chan 114		Apt Elev	868

VOR-A  
FAIRFIELD COUNTY (LHQ)

DME or RADAR required.	MISSED APPROACH: Climb to 2000 then climbing left turn to 3000 direct APE VORTAC and hold.
When local altimeter setting not received, use Rickenbacker Intl altimeter setting and increase all MDAs 60 feet and visibility Cat C ¼ SM. Circling Rwy 28 NA at night. Rwy 28 helicopter visibility reduction below 1 SM NA.	

ASOS 118.375	COLUMBUS APP CON 134.0 279.6	CLNC DEL 121.65	UNICOM 122.725 (CTAF) 1
-----------------	---------------------------------	--------------------	----------------------------



ELEV 868	194°	5003 X 75	10	28
REIL Rwy 10 and 28	MIRL Rwy 10-28	JUBBI APE 18 RADAR	CUTOSS APE 9 RADAR	APE VORTAC
2000	3000	APE	3000	3000
5.9 NM	9 NM	9 NM		
FAF to MAP 5.9 NM	CATEGORY A	B	C	D
Knots 60 90 120 150 180	1500-1	1540-1	1620-2¼	NA
Min:Sec 5:54 3:56 2:57 2:22 1:58	632 (700-1)	672 (700-1)	752 (800-2¼)	

EC-2, 10 JUL 2025 to 07 AUG 2025

EC-2, 10 JUL 2025 to 07 AUG 2025