

WAAS CH 97701 W10A	APP CRS 100°	Rwy Ldg TDZE 857 Apt Elev 868	5003
--	------------------------	---	-------------

RNAV (GPS) RWY 10

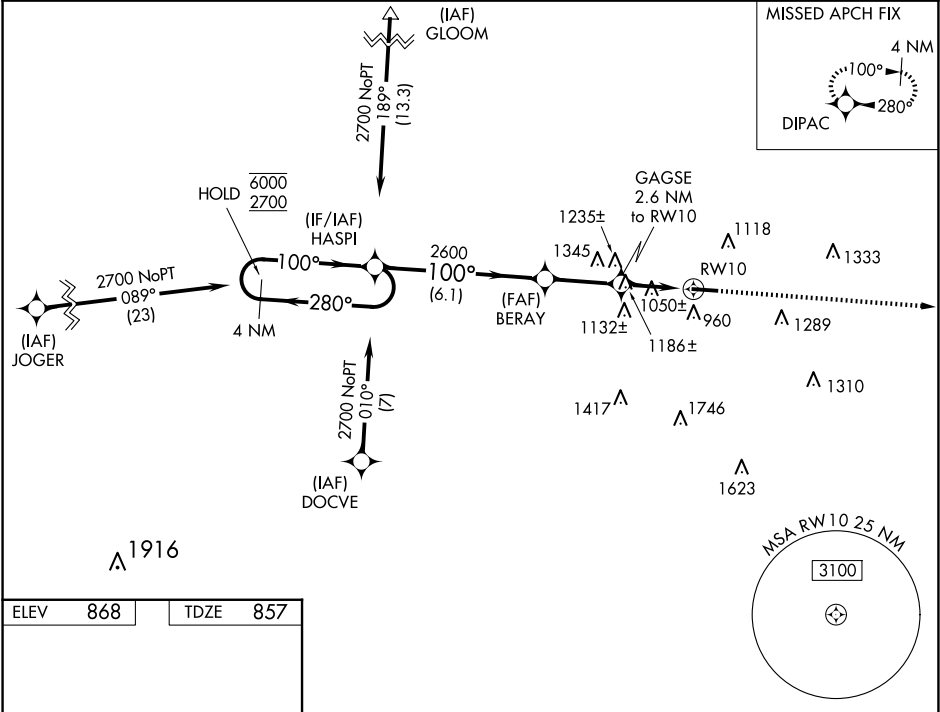
FAIRFIELD COUNTY (LHQ)

RNP APCH - GPS.

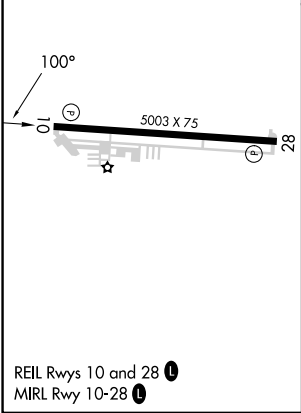
⚠ Rwy 10 helicopter visibility reduction below $\frac{3}{4}$ SM NA. When local altimeter setting not received, use Rickenbacker Intl altimeter setting and increase all MDAs 60 feet and LNAV visibility Cat C $\frac{1}{8}$ SM, and Circling visibility Cat C $\frac{1}{4}$ SM. When Circling Rwy 28 at night, operational VGSI required, remain on or above VGSI glidepath until threshold.

MISSED APPROACH:
Climb to 2800 direct
DIPAC and hold.

ASOS 118.375	COLUMBUS APP CON 134.0 279.6	CLNC DEL 121.65	UNICOM 122.725 (CTAF) 0
------------------------	--	---------------------------	--



ELEV	868	TDZE	857
------	-----	------	-----



4 NM Holding Pattern HASPI				2800	DIPAC
6000 2700 280° 100° 100°				GAGSE 2.6 NM to RW10	
2600 3.00° TCH 40 1720				RW10	
6.1 NM 2.8 NM 2.6 NM					
CATEGORY	A	B	C	D	
LP MDA	1300-1	443 (500-1)	1300-1 $\frac{3}{8}$ 443 (500-1 $\frac{3}{8}$)	NA	
LNAV MDA	1440-1	583 (600-1)	1440-1 $\frac{3}{4}$ 583 (600-1 $\frac{3}{4}$)	NA	
CIRCLING	1500-1 632 (700-1)	1540-1 672 (700-1)	1620-2 $\frac{1}{4}$ 752 (800-2 $\frac{1}{4}$)	NA	

EC-2, 10 JUL 2025 to 07 AUG 2025

EC-2, 10 JUL 2025 to 07 AUG 2025