

WAAS CH <b>86608</b> <b>W35A</b>	APP CRS <b>345°</b>	Rwy Idg TDZE Apt Elev	<b>5002</b> <b>610</b> <b>610</b>
--	------------------------	-----------------------------	---

RNAV (GPS) RWY 35

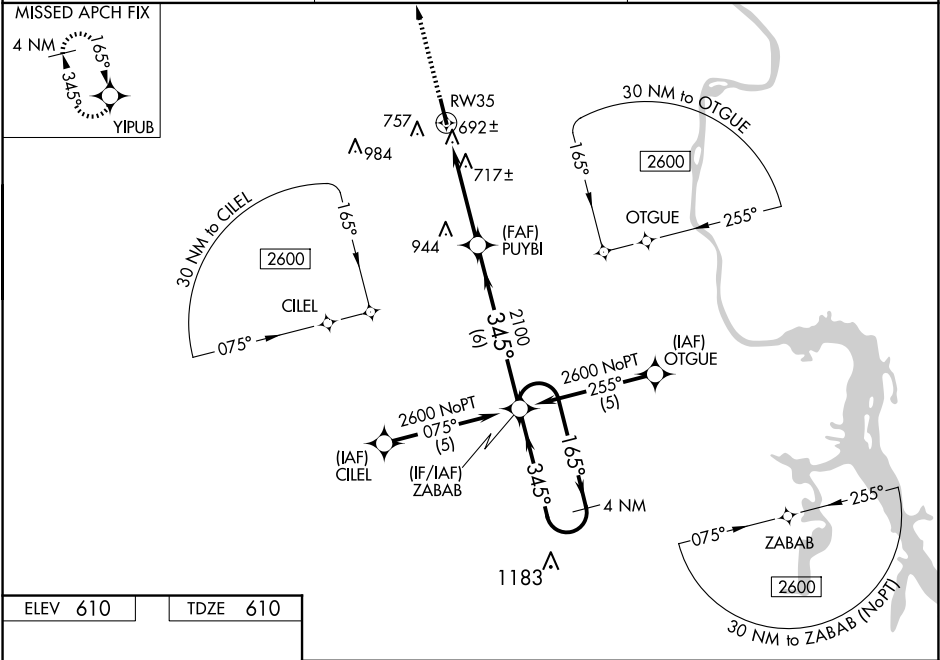
ROBERT SIBLEY (SZY)

RNP-APCH - GPS

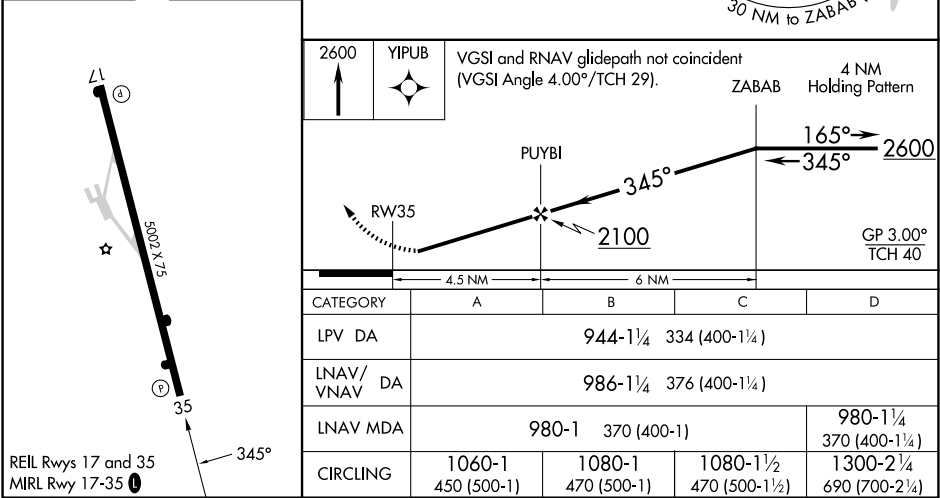
Baro-VNAV NA when using Jackson Rgnl altimeter setting. For uncompensated Baro-VNAV systems, LNAV/VNAV NA below -16°C or above 47°C. Helicopter visibility reduction below 1 SM not authorized. When local altimeter setting not received, use Jackson Rgnl altimeter setting: increase LPV DA to 1042 and all visibilities ¼ SM, increase LNAV/VNAV DA to 1084 and all visibilities ½ SM; increase all MDAs 100 feet and LNAV visibility Cat C and D and Circling visibility Cat D ¼ SM. Straight-in Rwy 35 NA at night, Circling Rwy 17, 35 NA at night.

MISSED APPROACH:  
Climb to 2600 direct YIPUB and hold.

AWOS-3 <b>118.425</b>	MEMPHIS CENTER <b>124.35 318.1</b>	UNICOM <b>122.7 (CTAF) 0</b>
--------------------------	---------------------------------------	---------------------------------



ELEV 610	TDZE 610
----------	----------



REIL Rwy 17 and 35  
MIRL Rwy 17-35 0

5002 x 75

35

345°