

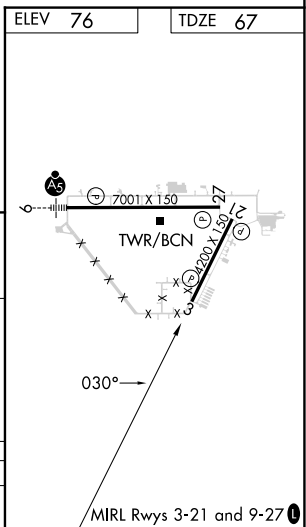
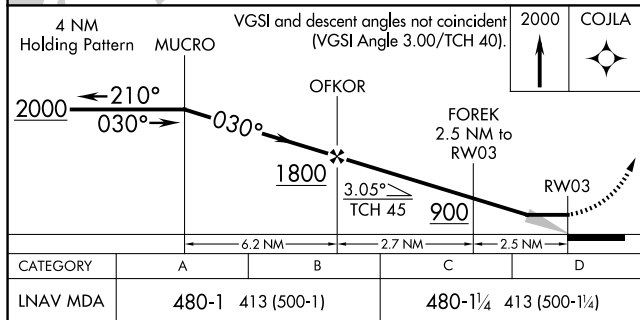
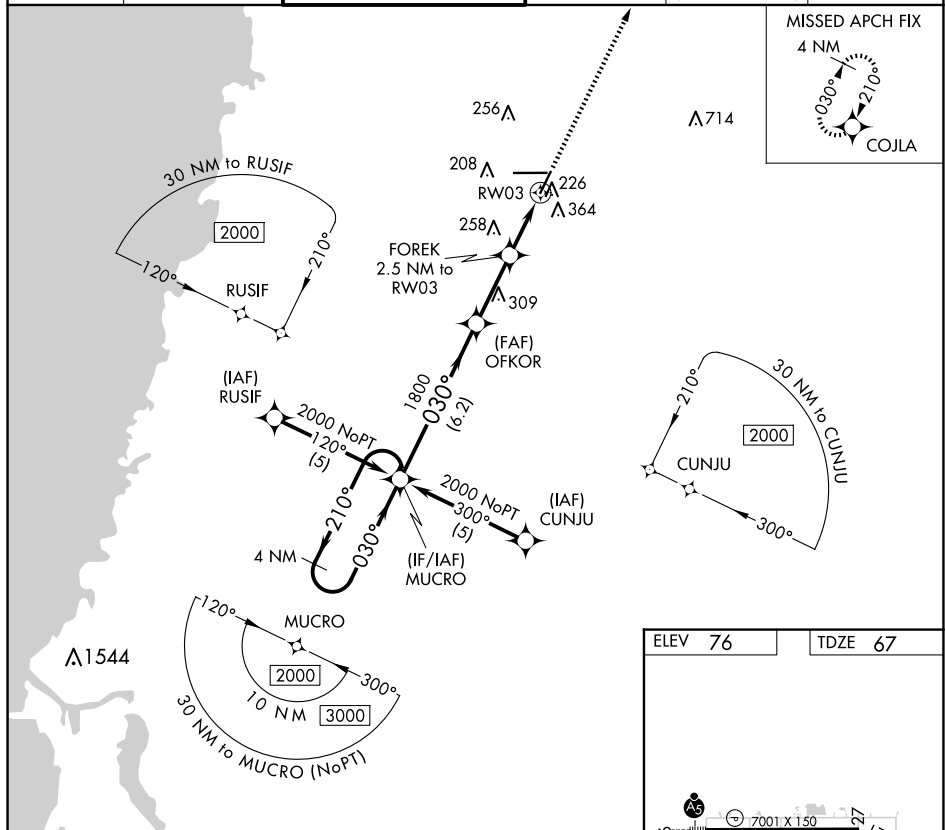
25051

RNAV (GPS) RWY 3
BROOKSVILLE-TAMPA BAY RGNL (BKV)

T
A When local altimeter setting not received, use Tampa Intl altimeter setting and increase all MDA 80 feet and increase LNAV Cat D visibility ¼ mile.

MISSED APPROACH: Climb to 2000 direct
COJLA and hold.

ASOS 134.725	TAMPA APP CON 125.3 316.05	BROOKSVILLE TOWER ★ 118.55 (CTAF) 0	GND CON 121.4	CLNC DEL 119.125 (When twr closed)	UNICOM 123.0
------------------------	--------------------------------------	-----------------------------------------------	-------------------------	-------------------------------------------------	------------------------

BROOKSVILLE-TAMPA BAY RGNL (BKV)
RNAV (GPS) RWY 3

28°28'N-82°27'W

SE-3, 10 JUL 2025 to 07 AUG 2025