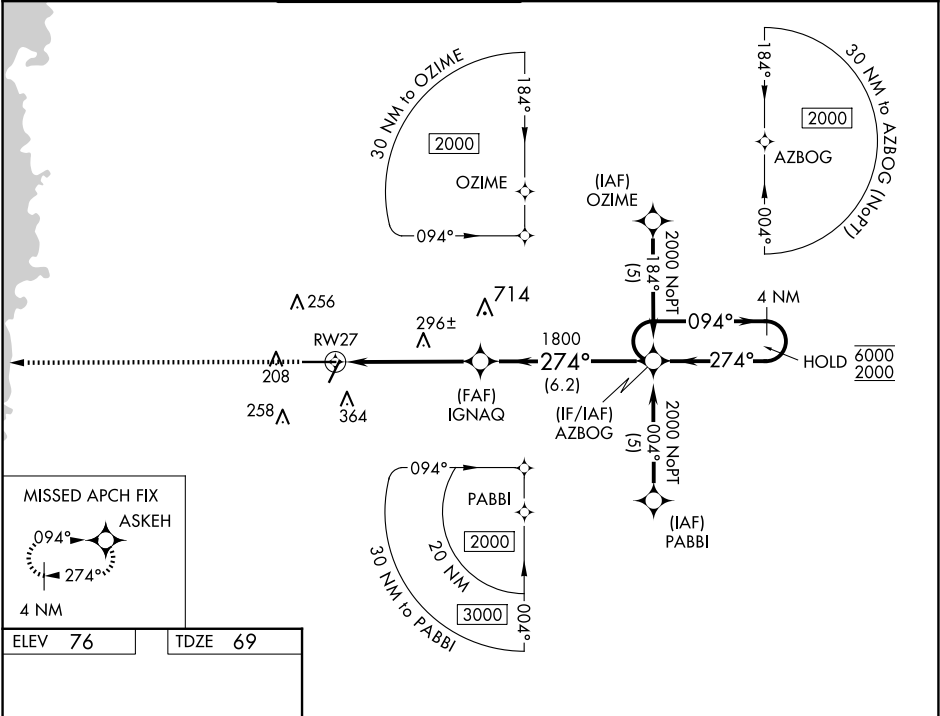


WAAS CH 86408 W27A	APP CRS 274°	Rwy ldg TDZE 69 Apt Elev 76
--	------------------------	---

RNAV (GPS) RWY 27

BROOKSVILLE-TAMPA BAY RGNL (BKV)

RNP APCH.				MISSED APPROACH: Climb to 2000 direct ASKEH and hold.	
Rwy 27 helicopter visibility reduction below ¾ SM NA. For uncompensated Baro-VNAV systems, LNAV/VNAV NA below -15°C or above 48°C.					
ASOS 134.725	TAMPA APP CON 125.3 316.05	BROOKSVILLE TOWER ★ 118.55 (CTAF) 0	GND CON 121.4	CLNC DEL 119.125 (When twr closed)	UNICOM 123.0



ELEV 76 TDZE 69		2000 ASKEH		VGSI and RNAV glidepath not coincident (VGSI Angle 3.00/TCH 53).	
* LNAV only.		* 1.4 NM to RW27		4 NM Holding Pattern	
RW27		IGNAQ 1800		AZBOG	
1.4 NM		3.8 NM		6.2 NM	
CATEGORY	A	B	C	D	
LPV DA	442-1¼ 373 (400-1¼)				
LNAV/VNAV DA	595-1¾ 526 (600-1¾)				
LNAV MDA	620-1	551 (600-1)	620-1½ 551 (600-1½)	620-1¾ 551 (600-1¾)	