

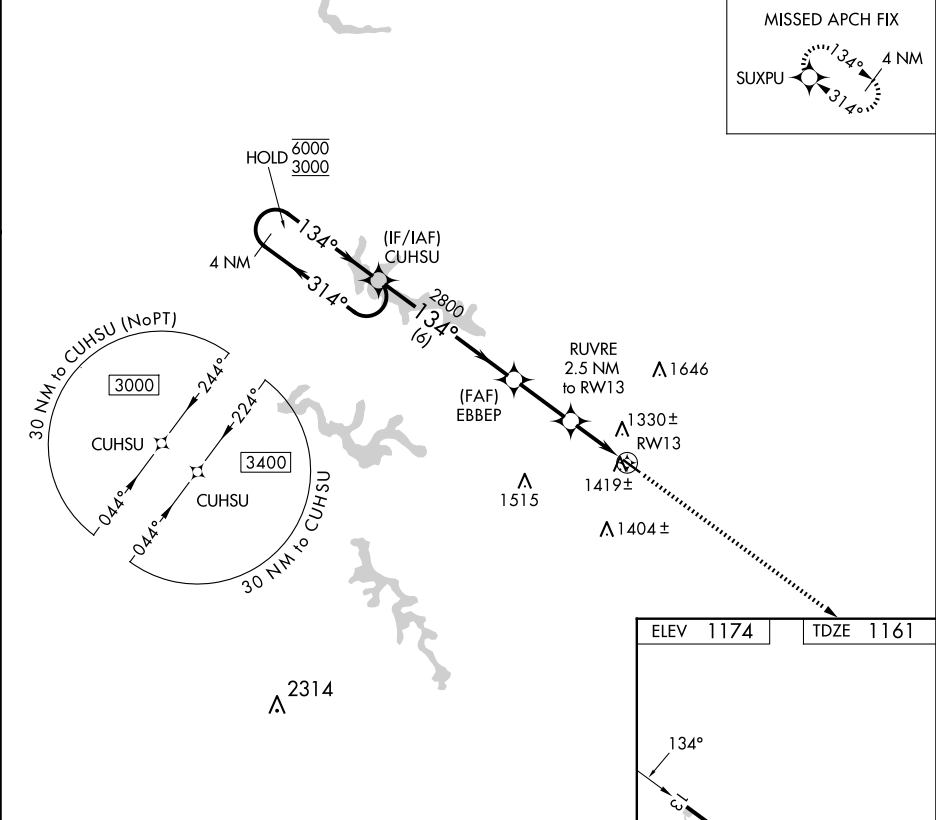
APP CRS	Rwy Idg	3280
134°	TDZE	1161
	Apt Elev	1174

RNAV (GPS) RWY 13

HARRISON COUNTY (8G6)

RNP APCH.	MISSED APPROACH: Climb to 3100 direct SUXPU and hold.
<div><div>▼</div><div>NA</div></div> Rwy 13 helicopter visibility reduction below 1 SM NA. Use Wheeling altimeter setting; when not received, use Washington altimeter setting and increase all MDA 40 feet. Procedure NA at night.	

HLG ASOS 127.375	CLEVELAND CENTER 126.95 239.30	UNICOM 122.8 (CTAF) 1
---------------------	-----------------------------------	--------------------------



4 NM Holding Pattern		Visual Segment - Obstacles.		3100	SUXPU
CATEGORY	A	B	C	D	
LNAV MDA	1720-1	559 (600-1)	NA		MIRL Rwy 13-31 1