

WAAS CH <b>77715</b> <b>W03A</b>	APP CRS <b>025°</b>	Rwy Idg <b>5350</b> TDZE <b>198</b> Apt Elev <b>198</b>
--	------------------------	---

# RNAV (GPS) RWY 3

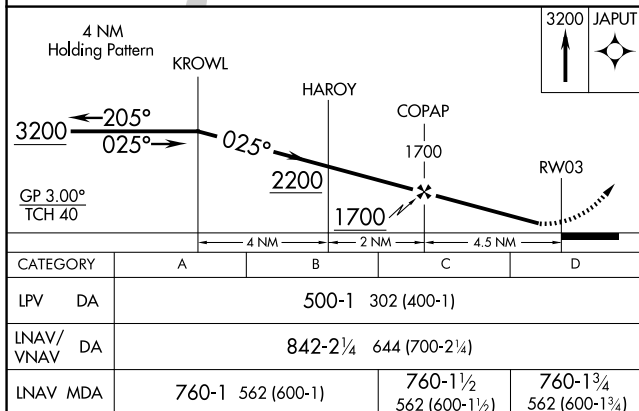
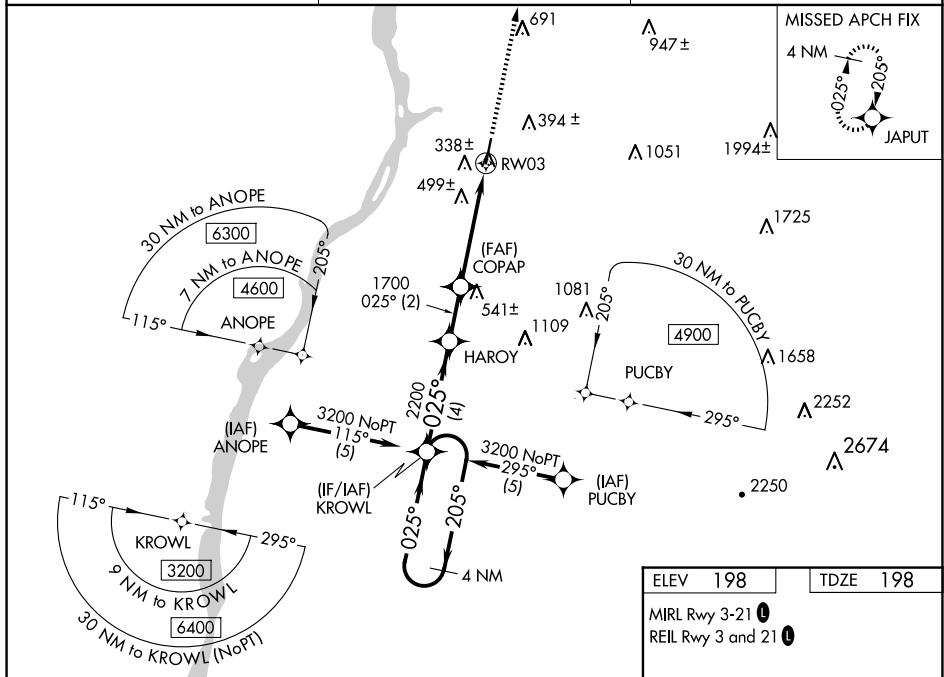
## COLUMBIA COUNTY (1B1)

RNP APCH.

**V** Baro-VNAV NA when using Albany altimeter setting. For uncompensated  
**A** Baro-VNAV systems, LNAV/VNAV NA below -15°C (5°F) or above 48°C  
**NA** (118°F). Rwy 3 helicopter visibility reduction below ¾ SM NA. When local  
altimeter setting not received, use Albany altimeter setting and increase all DA  
76 feet and MDA 80 feet, increase LPV all CATs, LNAV/VNAV all CATs,  
LNAV Cats C/D visibility ¼ mile.

**MISSED APPROACH:** Climb to 3200 direct JAPUT and hold, continue climb-in-hold to 3200.

AWOS-3 <b>133.525</b>	ALBANY APP CON <b>132.825 307.2</b>	UNICOM <b>123.05 (CTAF) 0</b>
--------------------------	--	----------------------------------



## RNAV (GPS) RWY 3