

WAAS CH <b>40215</b> <b>W21A</b>	APP CRS <b>205°</b>	Rwy Idg TDZE Apt Elev	<b>5190</b> <b>194</b> <b>198</b>
--	------------------------	-----------------------------	---

RNAV (GPS) RWY 21

COLUMBIA COUNTY (1B1)

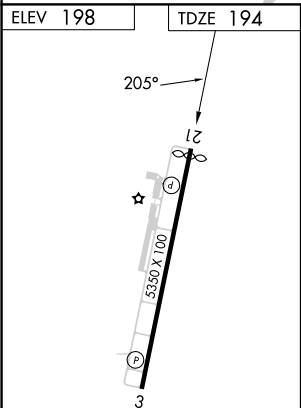
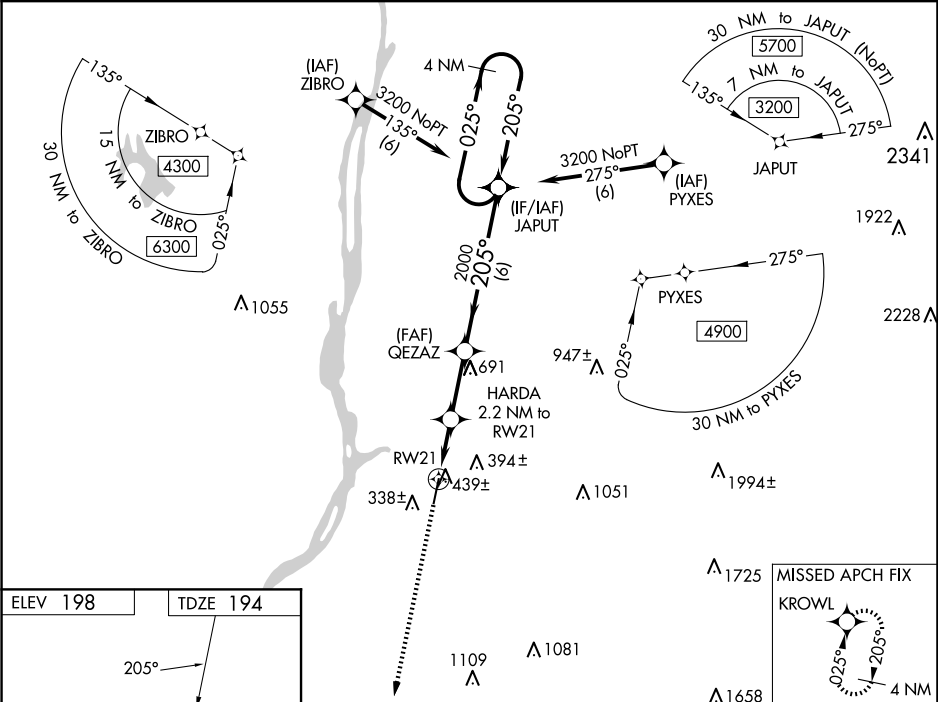
NA

Baro-VNAV NA when using Albany altimeter setting. For uncompensated Baro-VNAV systems, LNAV/VNAV NA below -15°C (5°F) or above 14°C (58°F). Rwy 21 helicopter visibility reduction below 1 SM NA. DME/DME RNP -0.3 NA. Straight-In Rwy 21 and Circling Rwy 21 NA at night. When local altimeter setting not received, use Albany altimeter setting and increase LPV DA to 638 feet and visibility to 1½ SM all Cats, LNAV/VNAV DA to 709 feet and visibility to 1¾ SM all Cats; increase all MDA 80 feet, LNAV Cat C/D visibility to 1¾ SM, Circling Cat C to 2¼ SM, and Cat D to 3 SM.

MISSED APPROACH:

Climb to 3200 direct KROWL and hold, continue climb-in-hold to 3200.

AWOS-3 <b>133.525</b>	ALBANY APP CON <b>132.825 307.2</b>	UNICOM <b>123.05 (CTAF)</b>
--------------------------	--	--------------------------------



3200 KROWL		VGSI and RNAV glidepath not coincident (VGSI Angle 3.52/TCH 41).		4 NM Holding Pattern	
*LNAV only.		JAPUT		025° → 3200	
HARDA 2.2 NM to RW21		QEZAZ		← 205°	
RW21		2000		GP 3.50° TCH 60	
→ 2.2 NM →		→ 2.5 NM →		→ 6 NM →	
CATEGORY	A	B	C	D	
LPV DA	562-1		368 (400-1)		
LNAV/VNAV DA	633-1¼		439 (500-1¼)		
LNAV MDA	700-1	506 (600-1)	700-1¾	506 (600-1¾)	
CIRCLING	740-1 542 (600-1)	860-1 662 (700-1)	860-1¾ 662 (700-1¾)	1020-2¾ 822 (900-2¾)	