

APP CRS  
230°

Rwy Idg  
TDZE  
Apt Elev

5001  
74  
74

RNAV (GPS) RWY 23

BERKELEY COUNTY (MKS)

RNP APCH - GPS.

▼  
▲

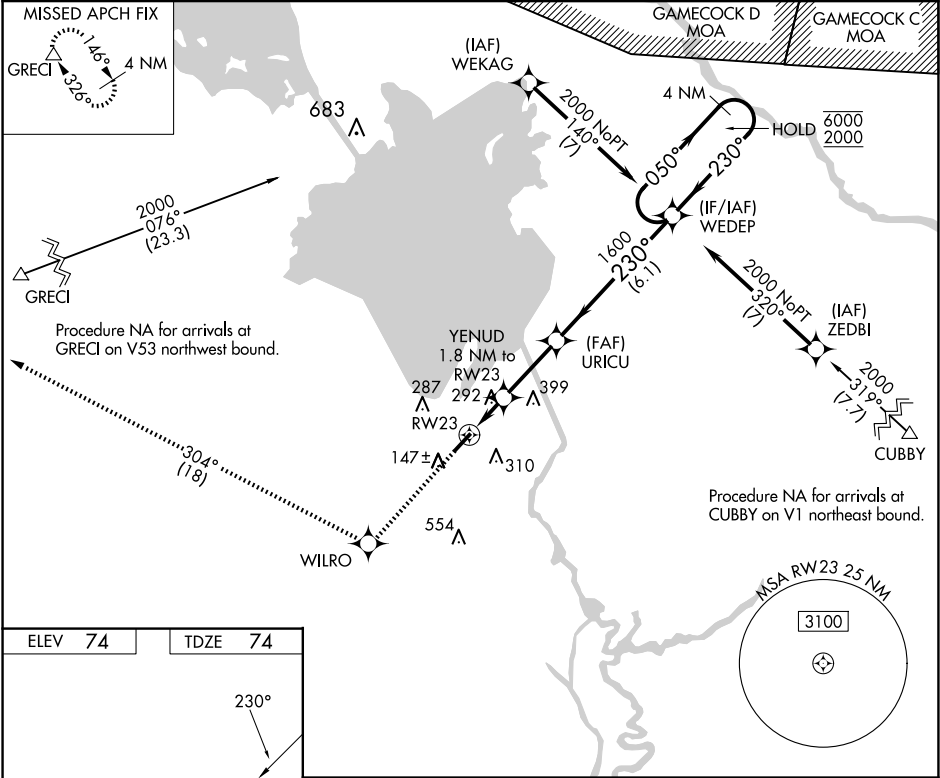
Procedure NA at night. Rwy 23 helicopter visibility reduction below 1 SM NA.  
When local altimeter setting not received, use Charleston AFB/Intl altimeter setting:  
increase all MDAs 60 feet and increase LNAV visibility Cat C and D and Circling  
visibility Cat C and D ¼ SM.

MISSED APPROACH: Climb to 2000 direct WILRO and on track 304° to GRECI and hold.

AWOS-3  
119.175

CHARLESTON APP CON  
121.275 379.925

UNICOM  
123.05 (CTAF) 0



ELEV 74 TDZE 74

230°

5001 x 75

2000 WILRO 304° tr GRECI

VGSI and descent angles not coincident (VGSI Angle 3.00/TCH 44).

4 NM Holding Pattern

WEDEP

050° 6000 230° 2000

URICU

YENUD 1.8 NM to RW23 680

3.04° TCH 57

1600

1.8 NM 2.8 NM 6.1 NM

CATEGORY	A	B	C	D
LNAV MDA	560-1	486 (500-1)	560-1⅓	486 (500-1⅓)
CIRCLING	580-1 506 (600-1)	620-1 546 (600-1)	700-1¾ 626 (700-1¾)	860-2½ 786 (800-2½)

MIRL Rwy 5-23 0