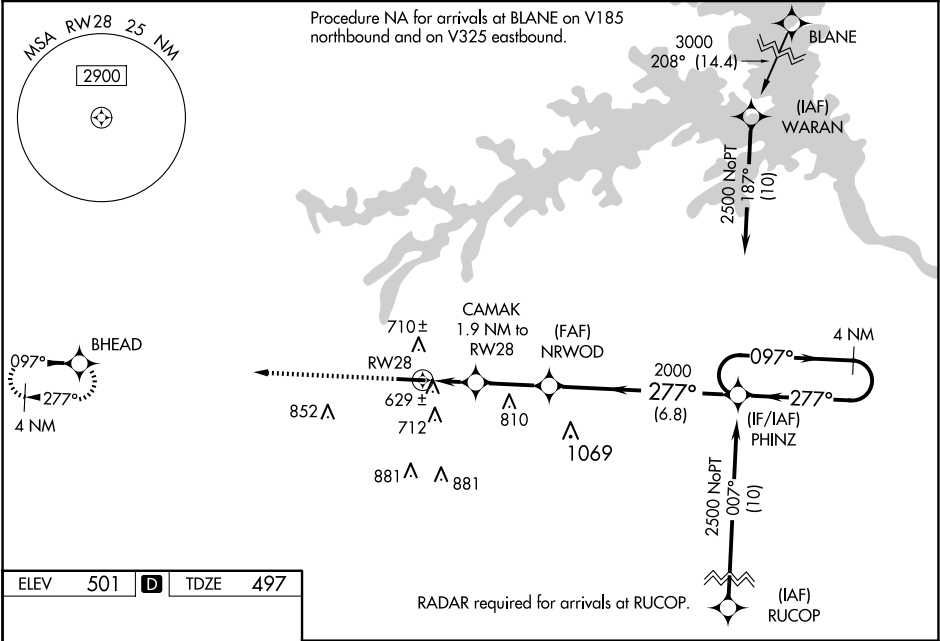


WAAS CH 58121 W28A	APP CRS 277°	Rwy Idg TDZE 497 Apt Elev 501
--	------------------------	---

RNAV (GPS) RWY 28
THOMSON/McDUFFIE COUNTY (HQU)

RNP APCH ▼ ▲ Baro-VNAV NA when using Daniel Field altimeter setting. For uncompensated Baro-VNAV systems, LNAV/VNAV NA below -15°C (5°F) or above 54°C (130°F). When local altimeter setting not received, use Daniel Field altimeter setting: increase LPV DA to 854 feet and visibility Cats A/B ½ SM, increase LNAV/VNAV DA to 877 feet; increase all MDAs 80 feet and increase visibility LNAV Cats C/D and Circling Cat C ¼ SM, and Circling Cat D ½ SM. Rwy 28 helicopter visibility reduction below ¼ SM NA.	MISSED APPROACH: Climb to 2500 direct BHEAD and hold.
---	---

AWOS-3 120.625	AUGUSTA APP CON ★ 124.45 270.3	UNICOM 122.8 (CTAF) 0
--------------------------	--	---------------------------------



ELEV 501	D	TDZE 497
-----------------	----------	-----------------

HIRL Rwy 10-28 0		RADAR required for arrivals at RUCOP.	
2500 BHEAD ↑ *LNAV only		VGSI and RNAV glidepath not coincident (VGSI Angle 3.50/TCH 50).	
551.4 X 100 1.0% UP		PHINZ 4 NM Holding Pattern	
RW28		NRWOD 2000	
CAMAK 1.9 NM to RW28		2000	
1.9 NM		GP 3.00° TCH 60	
2.6 NM		2000	
6.8 NM		2000	
CATEGORY	A	B	C
LPV DA	787-7/8	290 (300-7/8)	787-1 290 (300-1)
LNAV/VNAV DA	810-1 313 (400-1)		
LNAV MDA	880-1	383 (400-1)	880-1 383 (400-1)
CIRCLING	1060-1 559 (600-1)	1080-1 579 (600-1)	1200-2 699 (700-2) 1240-2 739 (800-2)

SE-4, 10 JUL 2025 to 07 AUG 2025

SE-4, 10 JUL 2025 to 07 AUG 2025