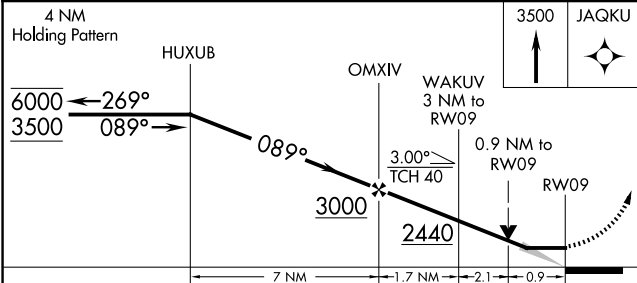
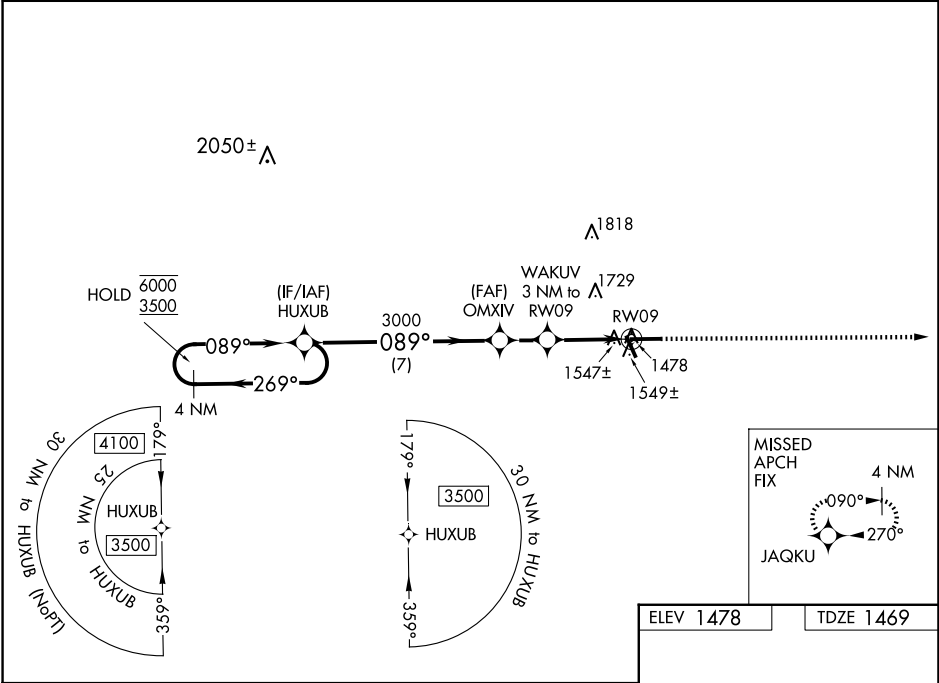


WAAS CH 99331 W09A	APP CRS 089°	Rwy Idg TDZE 1469 Apt Elev 1478	6000
--	------------------------	---	-------------

RNAV (GPS) RWY 9
TAYLOR COUNTY (MDZ)

RNP APCH.		MISSED APPROACH: Climb to 3500 direct JAQKU and hold.
-----------	--	---

AWOS-3 119.025	MINNEAPOLIS CENTER 124.4 317.7	UNICOM 122.8 (CTAF) 0
--------------------------	--	---------------------------------



ELEV 1478	TDZE 1469
<p>Diagram showing the approach path and altitudes. Key altitudes include 6000, 3500, 3000, 2440, and 3500. Distances are marked as 4 NM, 3 NM, and 0.9 NM. The path continues through OMXIV, WAKUV (3 NM to RW09), and RW09. Key altitudes include 3000, 2440, and 3500. Distances are marked as 7 NM, 1.7 NM, 2.1 NM, and 0.9 NM.</p>	
CATEGORY	A B C D
LP MDA	1800-1 331 (400-1)
LNAV MDA	1800-1 331 (400-1)
CIRCLING	1900-1 422 (500-1) 2040-1 562 (600-1) 2040-1½ 562 (600-1½) 2180-2¼ 702 (800-2¼)
REIL Rwy 9, 27 and 34 0 MRL Rwy 9-27 and 16-34 0	

EC-3, 10 JUL 2025 to 07 AUG 2025

EC-3, 10 JUL 2025 to 07 AUG 2025