

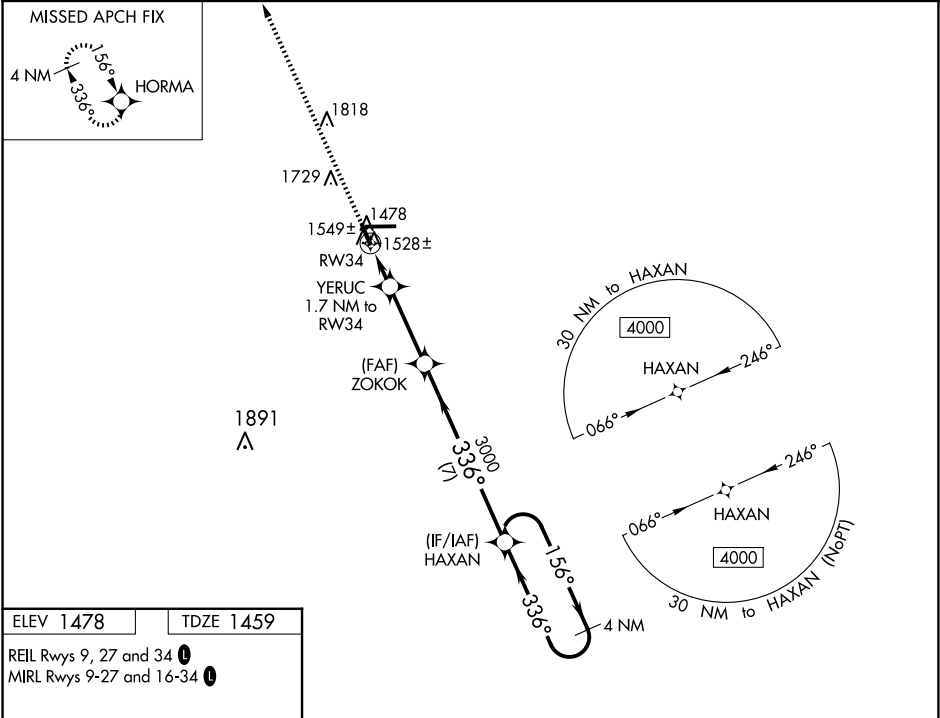
WAAS CH 73029 W34A	APP CRS 336°	Rwy Idg TDZE 1459 Apt Elev 1478
--	------------------------	---

RNAV (GPS) RWY 34

TAYLOR COUNTY (MDZ)

RNP APCH.	MISSED APPROACH: Climb to 4000 direct HORMA and hold.
<div><div>▼</div><div>When local altimeter setting not received, use Merrill altimeter setting: increase all MDA 100 feet and all Cat C and D visibilities ¼ SM. VDP NA when using Merrill altimeter setting.</div></div>	

AWOS-3 119.025	MINNEAPOLIS CENTER 124.4 317.7	UNICOM 122.8 (CTAF) 0
--------------------------	--	--



4000	HORMA	VGSI and descent angles not coincident (VGSI Angle 3.00/TCH 27).		4 NM
		HAXAN Holding Pattern		
		YERUC 1.7 NM to RW34	ZOKOK	156°
		0.9 NM to RW34		336°
		≤3.00° TCH 45		4000
		2020	3000	
		0.9	0.8	3 NM
				7 NM
CATEGORY	A	B	C	D
LP MDA	1780-1 321 (400-1)			
LNAV MDA	1800-1 341 (400-1)			
CIRCLING	1940-1 462 (500-1)	2040-1 562 (600-1)	2040-1½ 562 (600-1½)	2180-2¼ 702 (800-2¼)

EC-3, 10 JUL 2025 to 07 AUG 2025

EC-3, 10 JUL 2025 to 07 AUG 2025