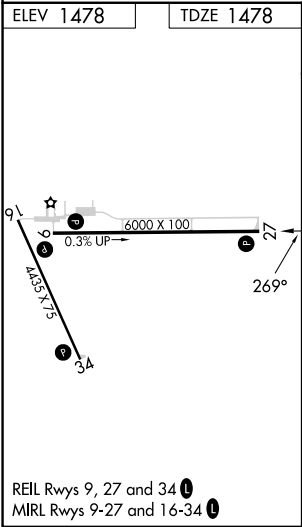
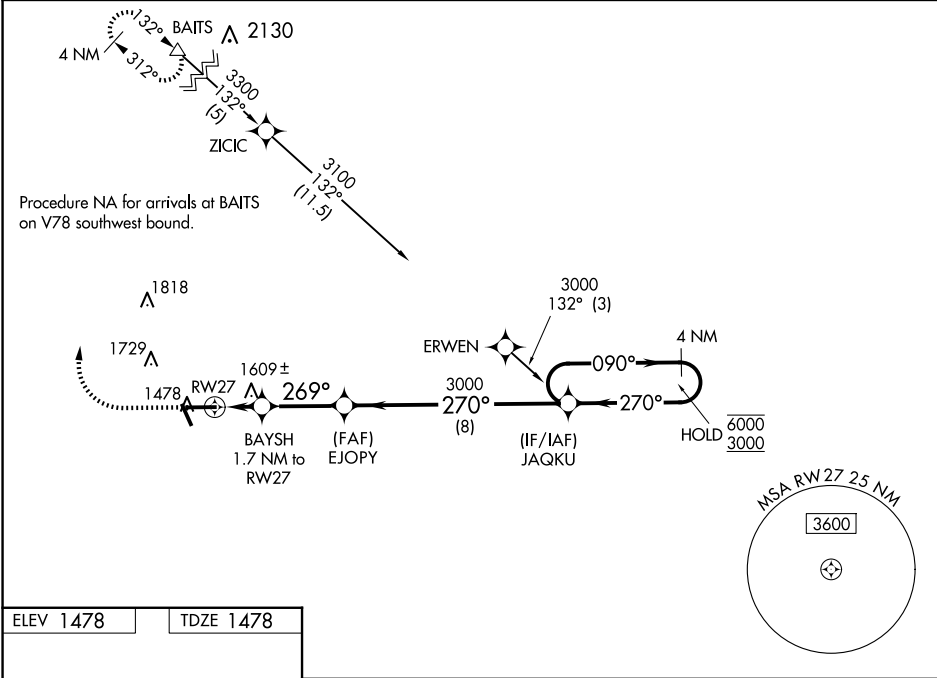


WAAS CH <b>66011</b> <b>W27A</b>	APP CRS <b>269°</b>	Rwy Idg TDZE <b>1478</b> Apt Elev <b>1478</b>
--	------------------------	---

RNAV (GPS) RWY 27  
TAYLOR COUNTY (MDZ)

RNP APCH-GPS.	MISSED APPROACH: Climb to 2000 then climbing right turn to 3300 direct BAITS and hold.
<div>▼</div> <div>▲</div> For uncompensated Baro-VNAV systems, LNAV/VNAV NA below -17°C or above 54°C.	

AWOS-3 <b>119.025</b>	MINNEAPOLIS CENTER <b>124.4 317.7</b>	UNICOM <b>122.8 (CTAF) 0</b>
--------------------------	--	---------------------------------



2000	3300	BAITS	EJOPY	JAQKU	4 NM Holding Pattern
		△	3000		
		BAYSH 1.7 NM to RW27	269°	270°	090° → 6000 ← 270° 3000
		1.1 NM to RW27	2060	3000	
		1.1 NM	0.7 NM	2.9 NM	8 NM
CATEGORY	A	B	C	D	
LPV DA		1678-¾	200 (200-¾)		
LNAV/VNAV DA		1877-1½	399 (400-1½)		
LNAV MDA	1860-1	382 (400-1)	1860-1½	382 (400-1½)	
CIRCLING	1900-1 422 (500-1)	2040-1 562 (600-1)	2040-1½ 562 (600-1½)	2180-2¼ 702 (800-2¼)	

EC-3, 10 JUL 2025 to 07 AUG 2025

EC-3, 10 JUL 2025 to 07 AUG 2025