

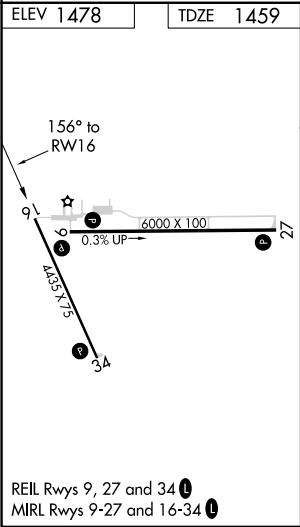
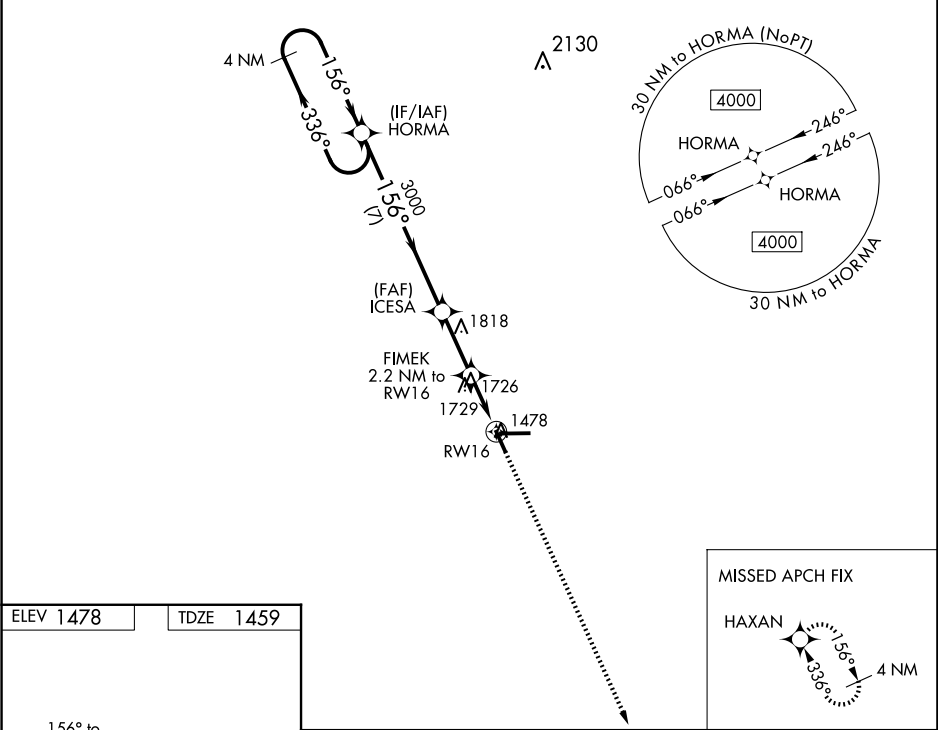
WAAS CH 86231 W16A	APP CRS 156°	Rwy Idg TDZE 1459 Apt Elev 1478
--	------------------------	---

RNAV (GPS) RWY 16

TAYLOR COUNTY (MDZ)

RNP APCH.	When local altimeter setting not received, use Merrill altimeter setting and increase all MDA 100 feet and increase all Cat C/D visibility ¼ mile. Rwy 16 helicopter visibility reduction below ¾ SM NA. VDP NA when using Merrill altimeter setting.	MISSED APPROACH: Climb to 4000 direct HAXAN and hold.
-----------	---	--

AWOS-3 119.025	MINNEAPOLIS CENTER 124.4 317.7	UNICOM 122.8 (CTAF) 0
--------------------------	--	---------------------------------



4 NM Holding Pattern				VGSI and descent angles not coincident (VGSI Angle 3.00/TCH 37).				4000	HAXAN