

APP CRS
182°

Rwy Idg
TDZE
313

Apl Elev
313

RNAV (GPS) RWY 18

MISSISSIPPI COUNTY (CHQ)

RNP APCH-GPS

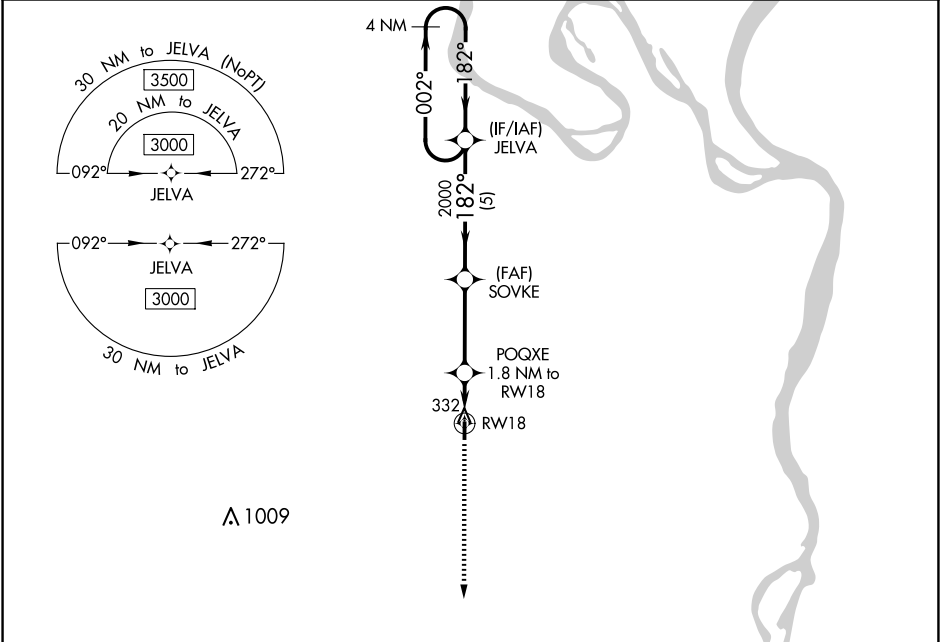
▼

NA

Procedure NA at night. Use Sikeston altimeter setting, if not received use Cairo altimeter setting and increase all MDA 20 feet. Helicopter visibility reduction below 1 SM NA.

MISSED APPROACH: Climb to 3000 direct CEDKA and hold.

SIK AWOS-3 119.175	MEMPHIS CENTER 133.65 292.15	CTAF 122.9 0
------------------------------	--	------------------------



ELEV 313

TDZE 313

182° to RW18

81

3196 X 60

36

3000

CEDKA

VGSI and RNAV glidepath not coincident (VGSI Angle 3.00/TCH 40).

4 NM Holding Pattern

POQXE 1.8 NM to RW18

SOVKE

JELVA

002°

182°

3000

1.8 NM

3.4 NM

5 NM

920

2000

3.00° TCH 45

182°

CATEGORY	A	B	C	D
LNAV MDA	800-1	487 (500-1)	NA	
CIRCLING	800-1 487 (500-1)	860-1 547 (600-1)	NA	

MIRL Rwy 18-36 0

REIL Rwy 18 and 36 0