

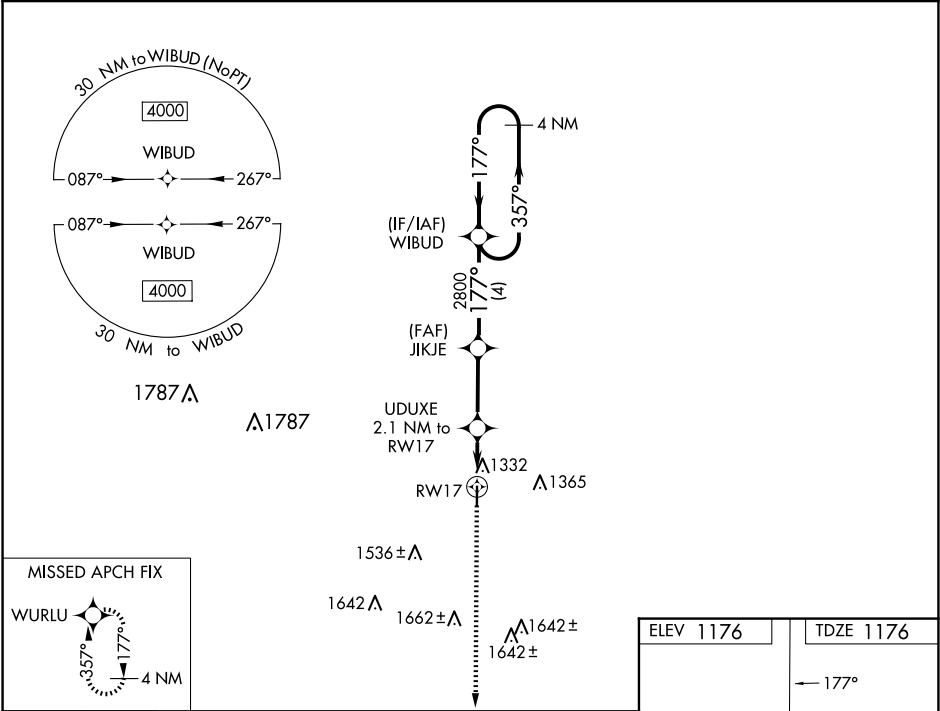
WAAS CH 58133 W17A	APP CRS 177°	Rwy Idg 4020 TDZE 1176 Apt Elev 1176
--	------------------------	---


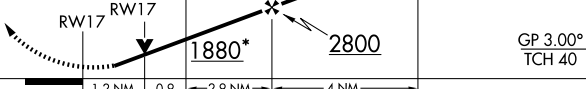

RNAV (GPS) RWY 17
HAMPTON MUNI (HPT)

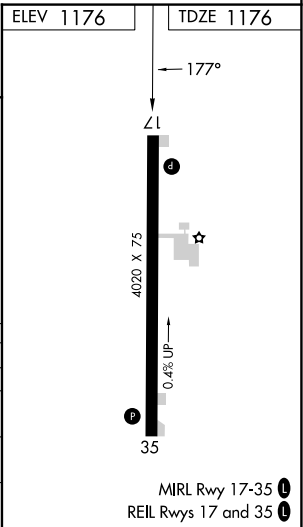
V VDP and Baro-VNAV NA when using Mason City altimeter setting. For uncompensated Baro-VNAV systems, LNAV/VNAV NA below -17°C (2°F) or above 54°C (130°F).
Δ NA DME/DME RNP: 0.3 NA. Helicopter visibility reduction below ¾ SM NA. When local altimeter setting not received, use Mason City altimeter setting and increase all DA 67 feet and all MDA 80 feet, and LNAV/VNAV all Cats visibility ¼ mile.

MISSED APPROACH:
Climb to 4000 direct WURLU and hold, continue climb-in-hold to 4000.

AWOS-3 121.025	MINNEAPOLIS CENTER 134.0 288.3	UNICOM 122.7 (CTAF) 0
--------------------------	--	---------------------------------



4000 ↑	WURLU 	VGSI and RNAV glidepath not coincident (VGSI Angle 3.00/TCH 22).		4 NM Holding Pattern
* LNAV only.	UDUXE 2.1 NM to RW17	JIKJE 2800	WIBUD	357° → ← 177° 4000
	* 1.2 NM to RW17	1880*	2800	GP 3.00° TCH 40
				
CATEGORY	A	B	C	D
LPV DA	1426-1	250 (300-1)	NA	
LNAV/ VNAV DA	1605-1½	429 (500-1½)	NA	
LNAV MDA	1600-1	424 (500-1)	NA	
 CIRCLING	1640-1	464 (500-1)	NA	



NC-3, 10 JUL 2025 to 07 AUG 2025

NC-3, 10 JUL 2025 to 07 AUG 2025