

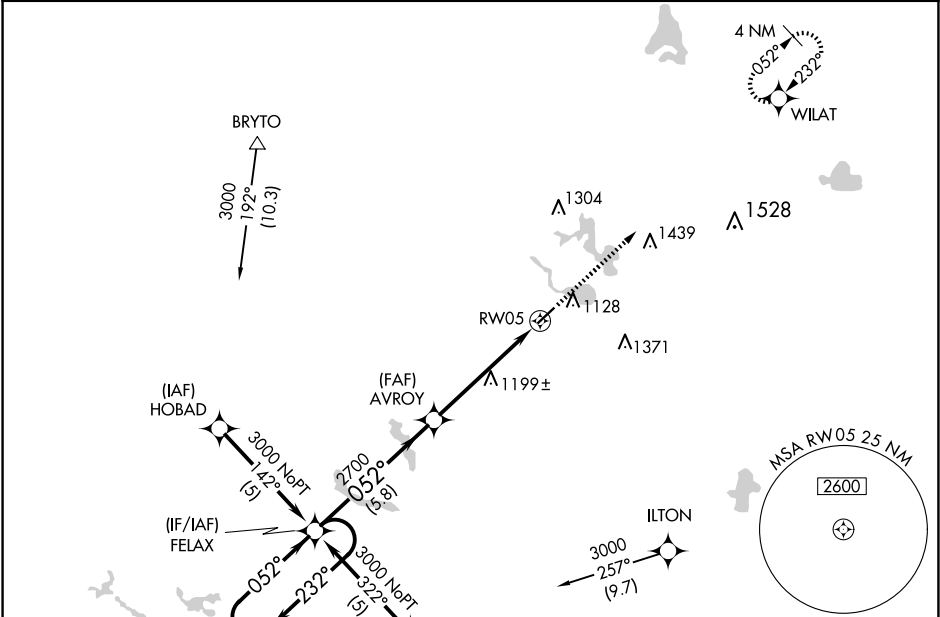
APP CRS	Rwy Idg	4000
052°	TDZE	990
	Apt Elev	995

RNAV (GPS) RWY 5

TRI-STATE STEUBEN COUNTY (ANQ)

RNP APCH.	For uncompensated Baro-VNAV systems, LNAV/VNAV NA below -16°C or above 54°C. Rwy 5 helicopter visibility reduction below ¾ SM NA.	MISSED APPROACH: Climb to 3000 direct WILAT and hold.
-----------	--	---

AWOS-3 118.175	FORT WAYNE APP CON 127.2 284.6 (SW/NW) 132.15 284.6 (SE/NE)	UNICOM 123.075 (CTAF) 0
-------------------	---	----------------------------



ELEV 995		D TDZE 990	
4 NM Holding Pattern		3000 WILAT	
3000 ← 232°		↑	
052° →		* LNAV only	
GP 3.00°		2700	
TCH 40		* 1.4 NM to RW05	
5.8 NM		3.8 NM	
1.4 NM		RW05	
CATEGORY	A	B	C
LNAV/VNAV	DA	1474-1¾	484 (500-1¾)
LNAV MDA	1460-1	470 (500-1)	1460-1½
			470 (500-1½)
			NA

EC-2, 10 JUL 2025 to 07 AUG 2025

EC-2, 10 JUL 2025 to 07 AUG 2025