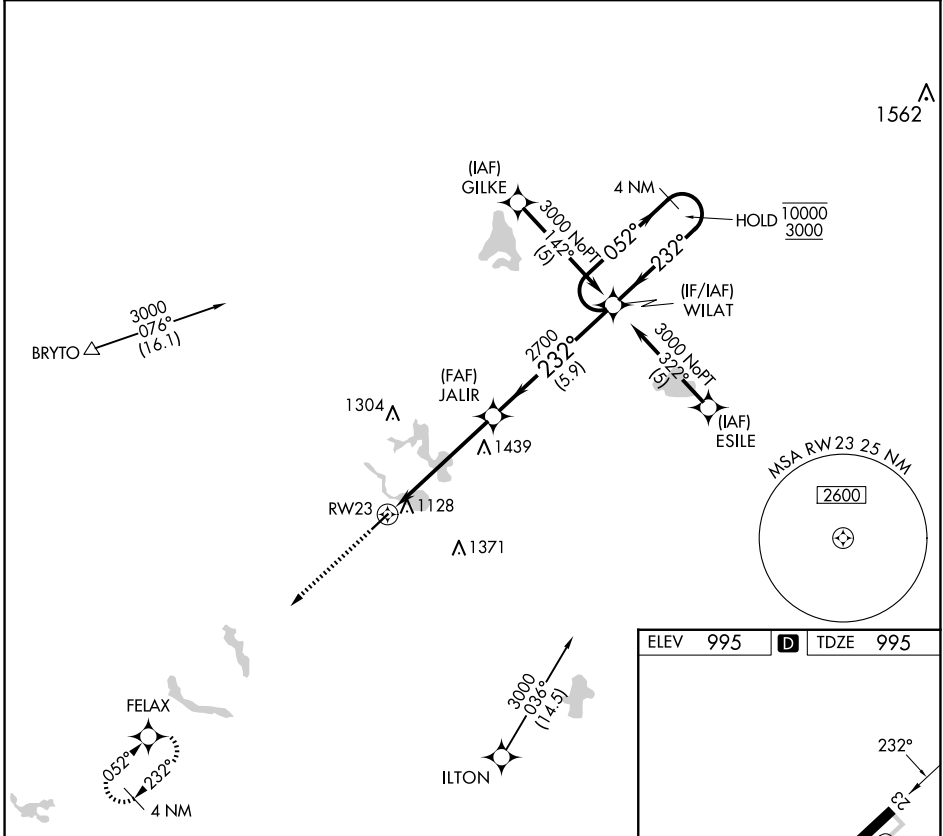


APP CRS	Rwy Idg	4000
232°	TDZE	995
	Apt Elev	995

RNAV (GPS) RWY 23

TRI-STATE STEUBEN COUNTY (A.N.Q.)

RNP APCH.		MISSED APPROACH: Climb to 3000 direct FELAX and hold.
▼ Rwy 23 helicopter visibility reduction below 1 SM NA. Procedure NA at night.		
AWOS-3 118.175	FORT WAYNE APP CON 127.2 284.6 (SW/NW) 132.15 284.6 (SE/NE)	UNICOM 123.075 (CTAF) 0



Visual Segment - Obstacles.		4 NM Holding Pattern	
3000	FELAX	JALIR	
↑	✧	WILAT	
RWY 23		052° → 10000	
		← 232° 3000	
5.2 NM		5.9 NM	
CATEGORY	A	B	C
LNAV MDA	1700-1	705 (800-1)	1700-2
			705 (800-2)
			NA

